
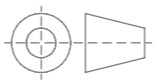
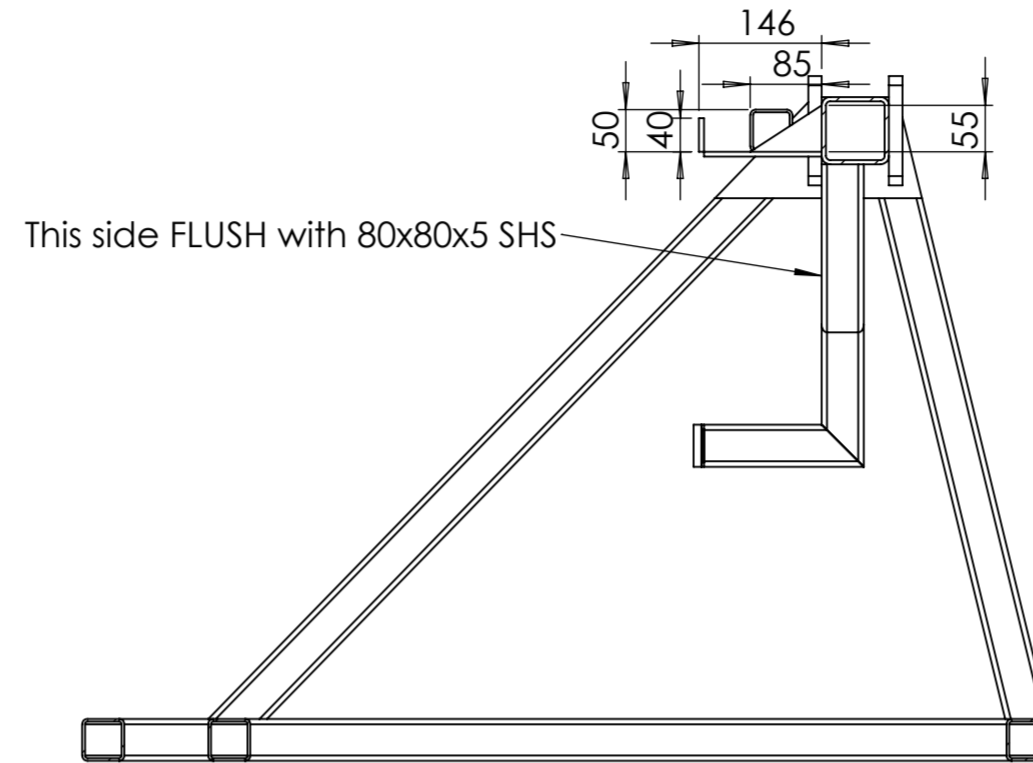
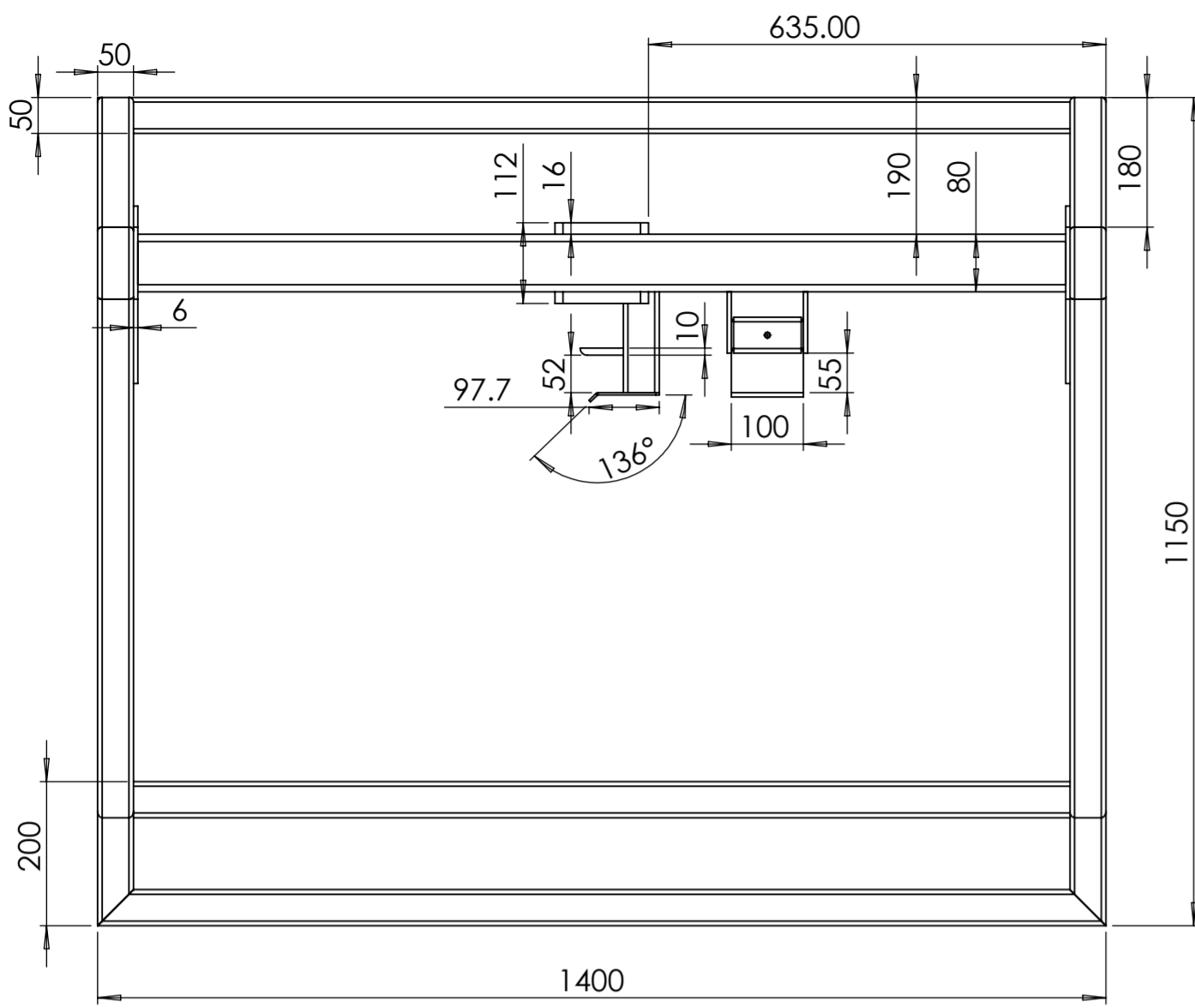
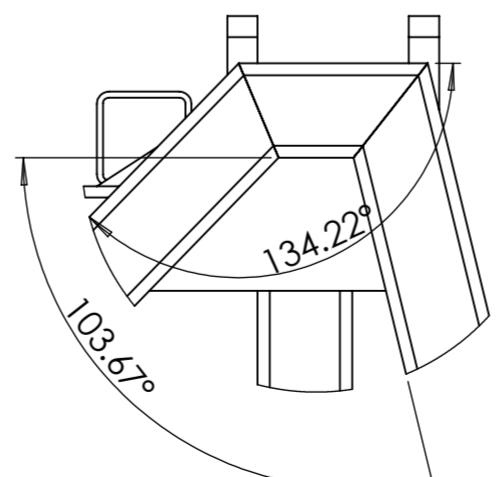
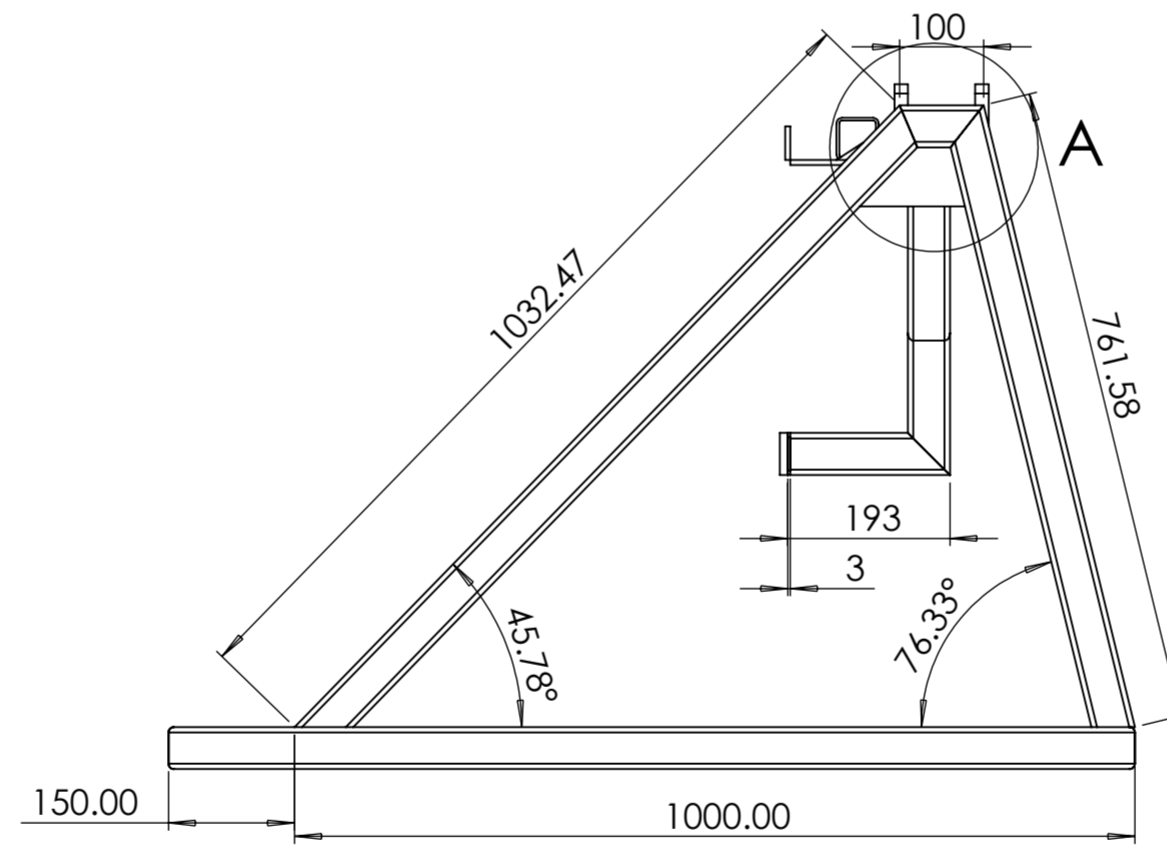
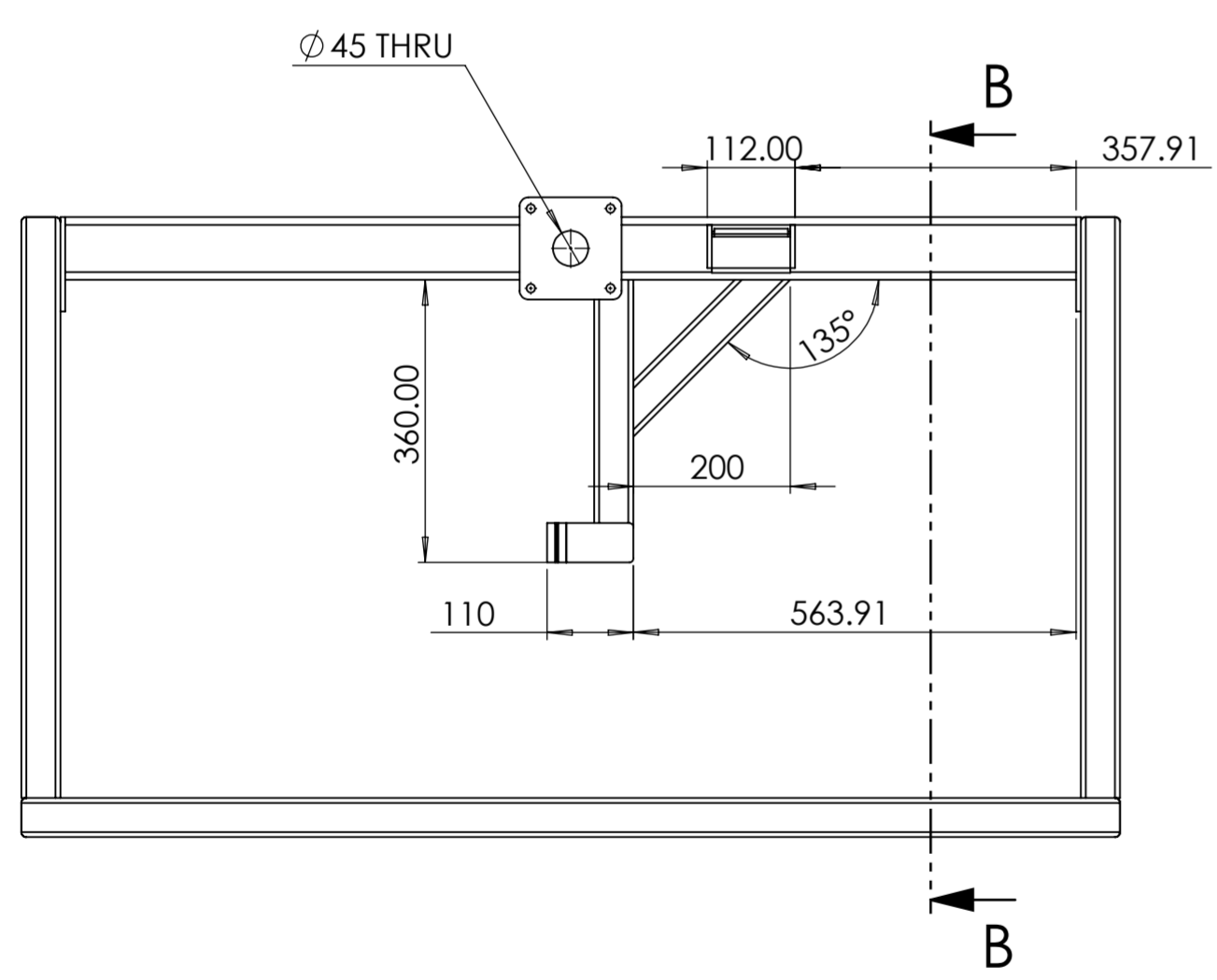
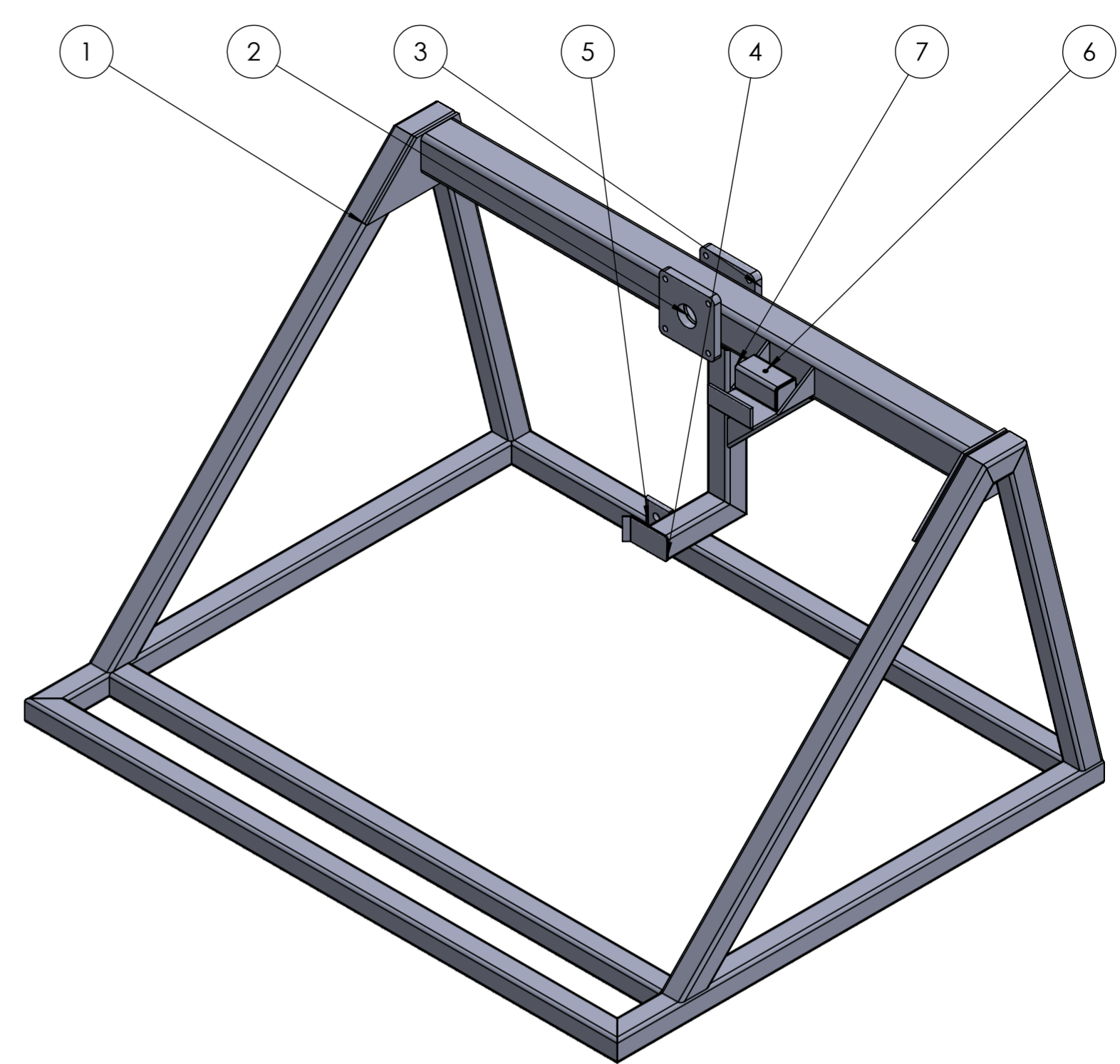


ITEM NO.	PART NUMBER	DESCRIPTION	QTY.
1	SES6633 -DET001-MAIN FRAME		1
2	ses6633-ASSY2-SHAFT MOUNT FINAL		1
3	SES6633-DET033-ROTATION SHAFT		1
4	SES6633-DET034-TOP LOCK PLATE		1
5	L1862.040	SQ FLANGED BEARING UNIT	2

 <p>Ventarus Engineering Services Ltd.</p> <p>The information contained in this drawing is the sole property of Ventarus Engineering Services Ltd. Any reproduction in part or as a whole without the written permission of Ventarus Engineering Services Ltd is strictly prohibited.</p>	Projection: Third Angle 	<b>Title:</b> SES6633-FULL ASSY- RADIUS SAW BLADE CHANGE STAND		
	All dimensions in millimetres Do not alter CAD drawings Do not scale	<b>Drawing Number:</b> SES6633-ASSY00-FULL		
	Tolerances Unless stated otherwise Linear: ±0.25mm Angular: ±0.05°	<b>Checked:</b> G.F.Phillips	<b>Drawn By:</b> G.F.Phillips	
		<b>Date:</b> 15/12/2022	<b>Status:</b> Release	
		<b>Sheet Size:</b> A3	<b>Scale:</b> 1:8	<b>Revision:</b> A <b>Sheet Number:</b> 1 of 13



SECTION B-B



DETAIL A  
SCALE 1 : 4

ITEM NO.	QTY.	DESCRIPTION
1	2	SES6633-DET012-GUSSET PLATE
2	1	SES6633-DET013-CROSS MEMBER
3	2	SES6633-DET014-BEARING PLATE
4	1	SES6633-DET021-LOWER LATCH END GUIDE
5	1	SES6633-DET022-LOWER LATCH END LOCK PLATE
6	1	SES6633-DET016-TOP LATCH BOX SECTION
7	2	SES6633-DET017-50x50 END CAP

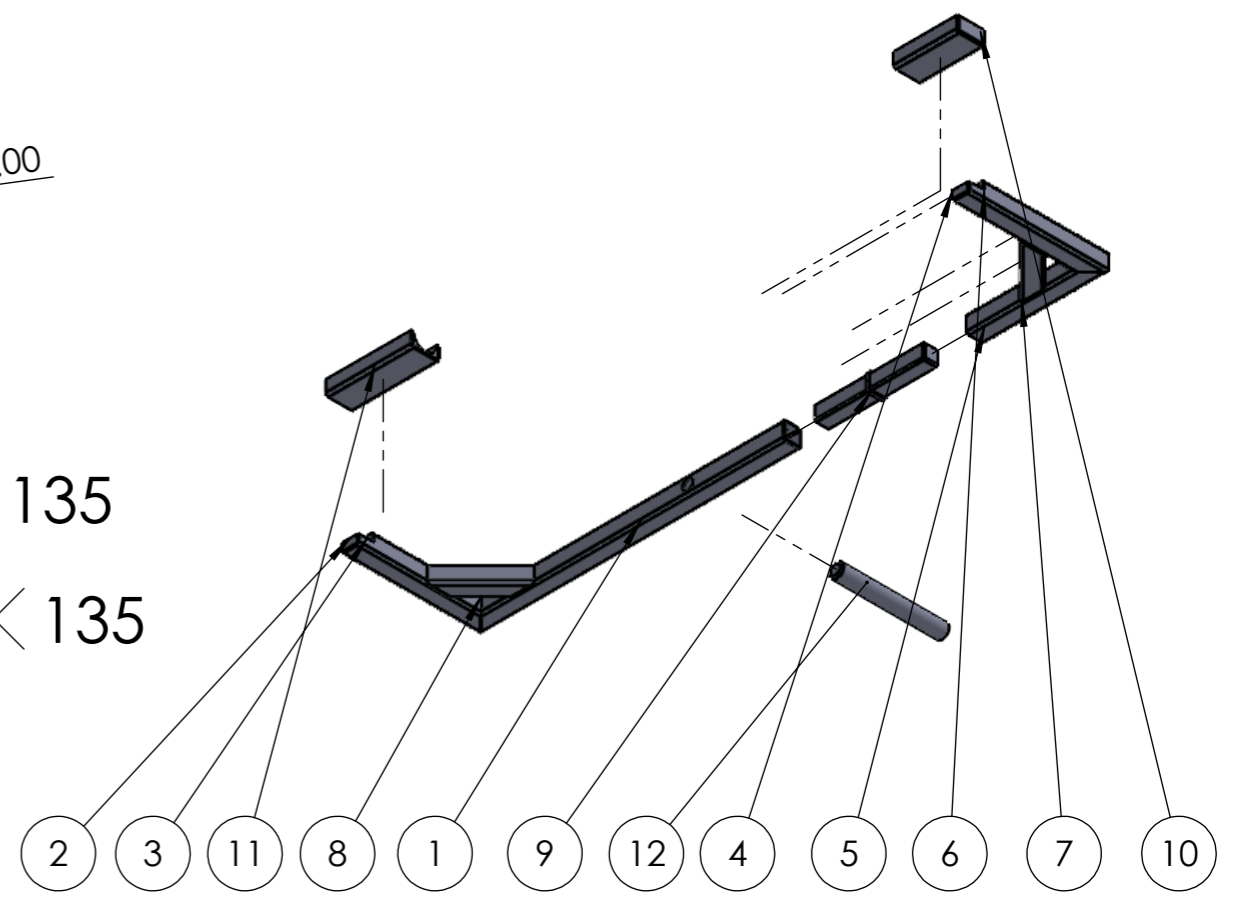
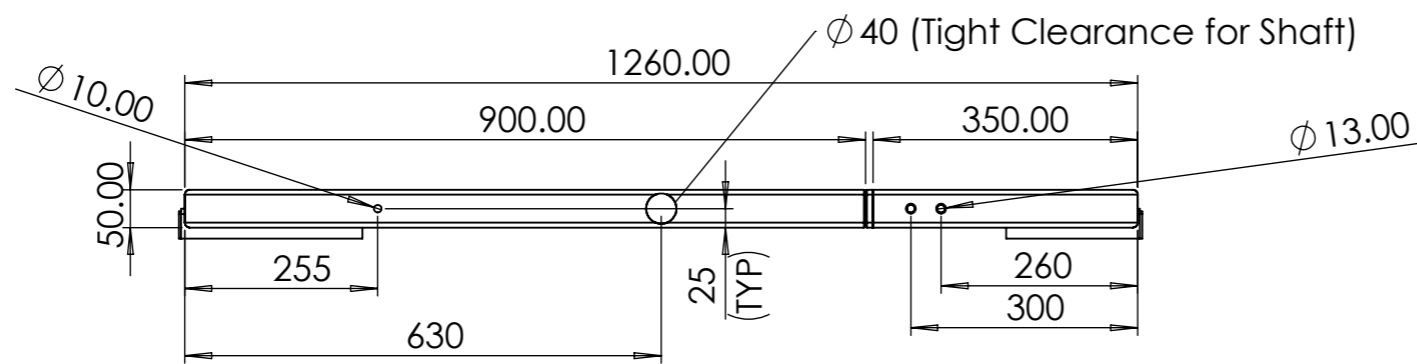
NOTES:  
 Material: 50x50x3.2 SHS (LCS)  
 80x80x3.6 SHS (LCS)  
 6mm THK LCS Plate  
 3mm THK LCS Sheet  
 16mm THK LCS Plate.

Part to be fully welded. Take care for distortion.

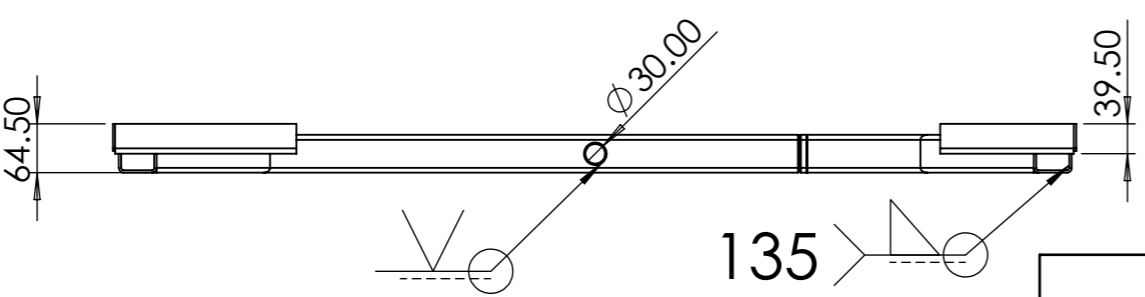
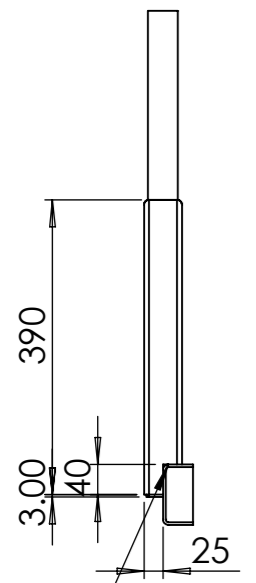
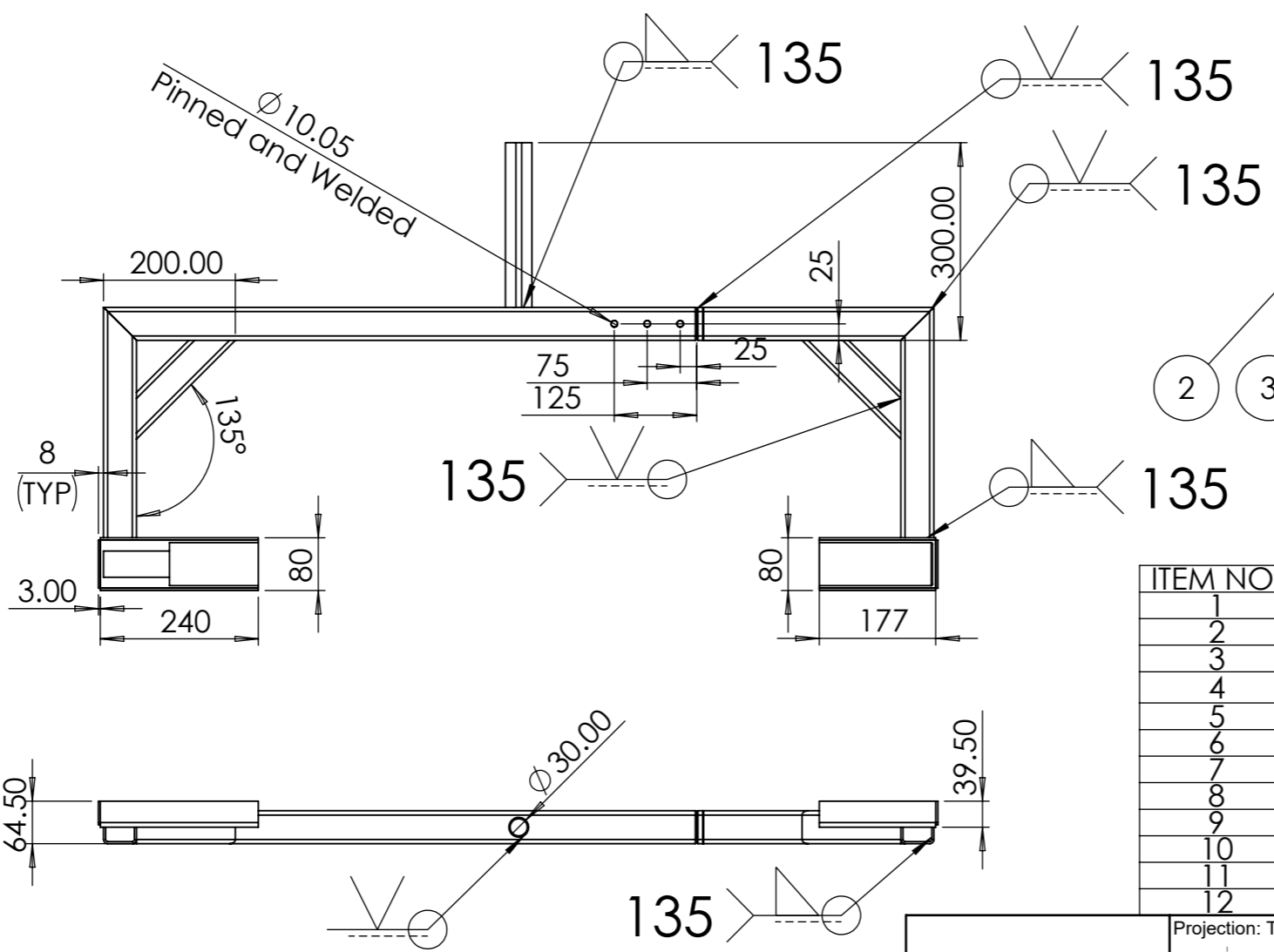


The information contained in this drawing is the sole property of Ventarus Engineering Services Ltd. Any reproduction in part or as a whole without the written permission of Ventarus Engineering Services Ltd is strictly prohibited.

Projection: Third Angle	Title: SES6633-ASSY1-MAIN FRAME		
All dimensions in millimetres Do not alter CAD drawings Do not scale	Drawing Number: SES6633-ASSY01-DET001		
Tolerances Unless stated otherwise	Checked: GP	Drawn By: G.F. Phillips.	
Linear: ±0.25mm Angular: ±0.05°	Date: 16/12/2022	Status: Released	
	Sheet Size: A2	Scale: 1:9	Revision: A Sheet Number: 2 of 13



ITEM NO.	PART NUMBER	QTY.
1	SES6633-DET0029-SHAFT MOUNT BEAM (LARGE) 1	1
2	SES6633-DET026-SHAFT MOUNT ARM END CAP	1
3	SES6633-DET024-SHAFT MOUNT LEFT ARM 1	1
4	SES6633-DET026-SHAFT MOUNT ARM END CAP (1)	1
5	SES6633-DET0029-SHAFT MOUNT BEAM (SMALL) 1	1
6	SES6633-DET025-SHAFT MOUNT RIGHT ARM 1	1
7	SES6633-DET027-SHAFT MOUNT GUSSET 1	1
8	SES6633-DET027-SHAFT MOUNT GUSSET 2	1
9	SES6633-DET032- MAIN SHAFT CONNECTION	1
10	SES6633-SA01-DET001	1
11	SES6633-SA01-DET002	1
12	SES6633-DET033-ROTATION SHAFT	1



NOTES:

DET032-MAIN SHAFT CONNECTION is welded and doweld in place on large beam. Small beam needs to slide off assembly freely. Use M12 x30 Bolts to secure.

2x SA01-DET001 Required  
2x SA01-DET002 Required.

Material is 50x50x3.2 SHS for main component.  
80x80x5 for Sub Assemblies.

Venterus Engineering Services Ltd

The information contained in this drawing is the sole property of Venterus Engineering Services Ltd. Any reproduction in part or as a whole without the written permission of Venterus Engineering Services Ltd is strictly prohibited.

Projection: Third Angle

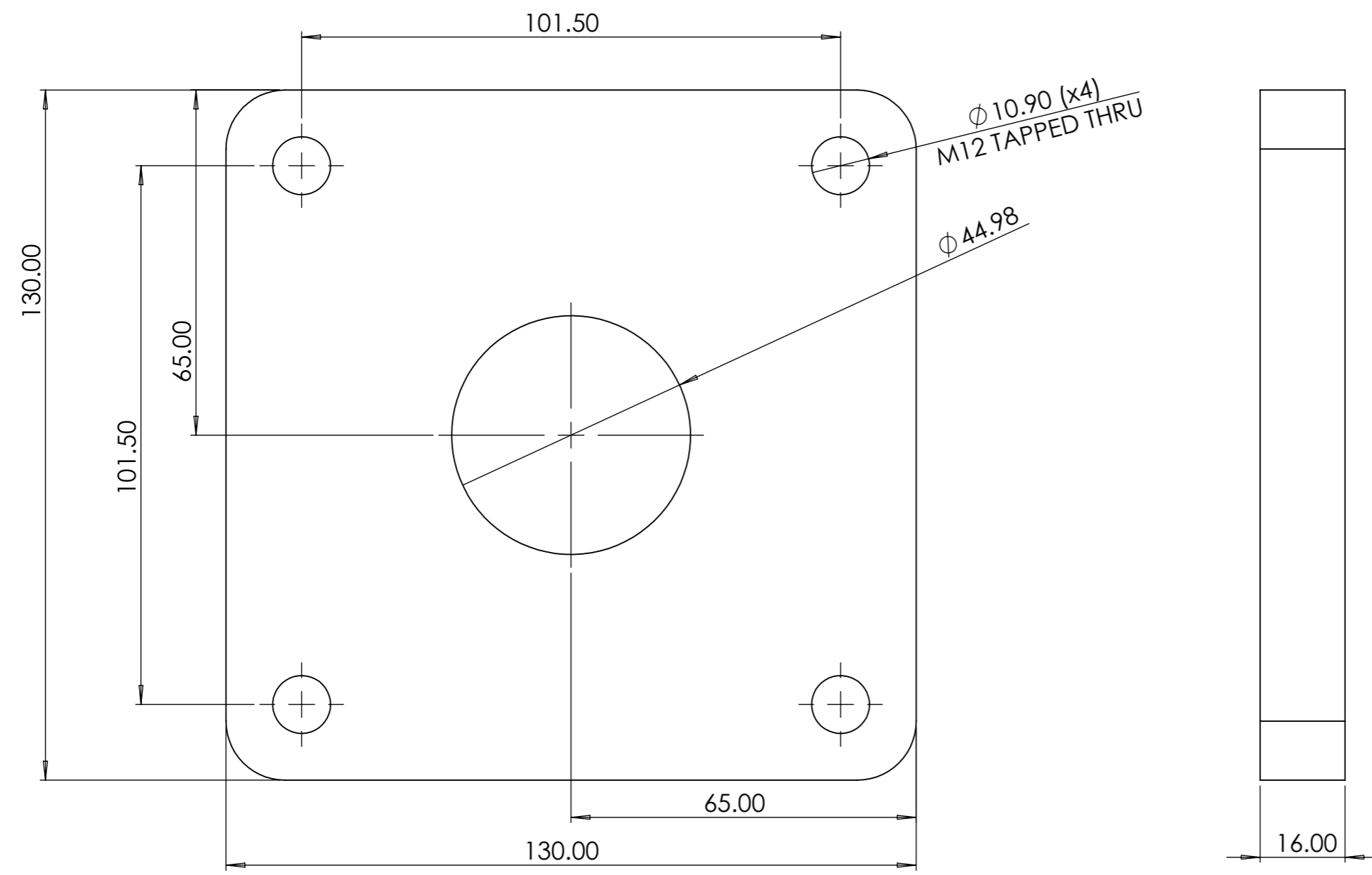
All dimensions in millimetres  
Do not alter CAD drawings  
Do not scale


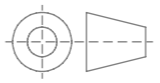
Tolerances  
Unless stated otherwise

Linear: ±0.25mm  
Angular: ±0.05°

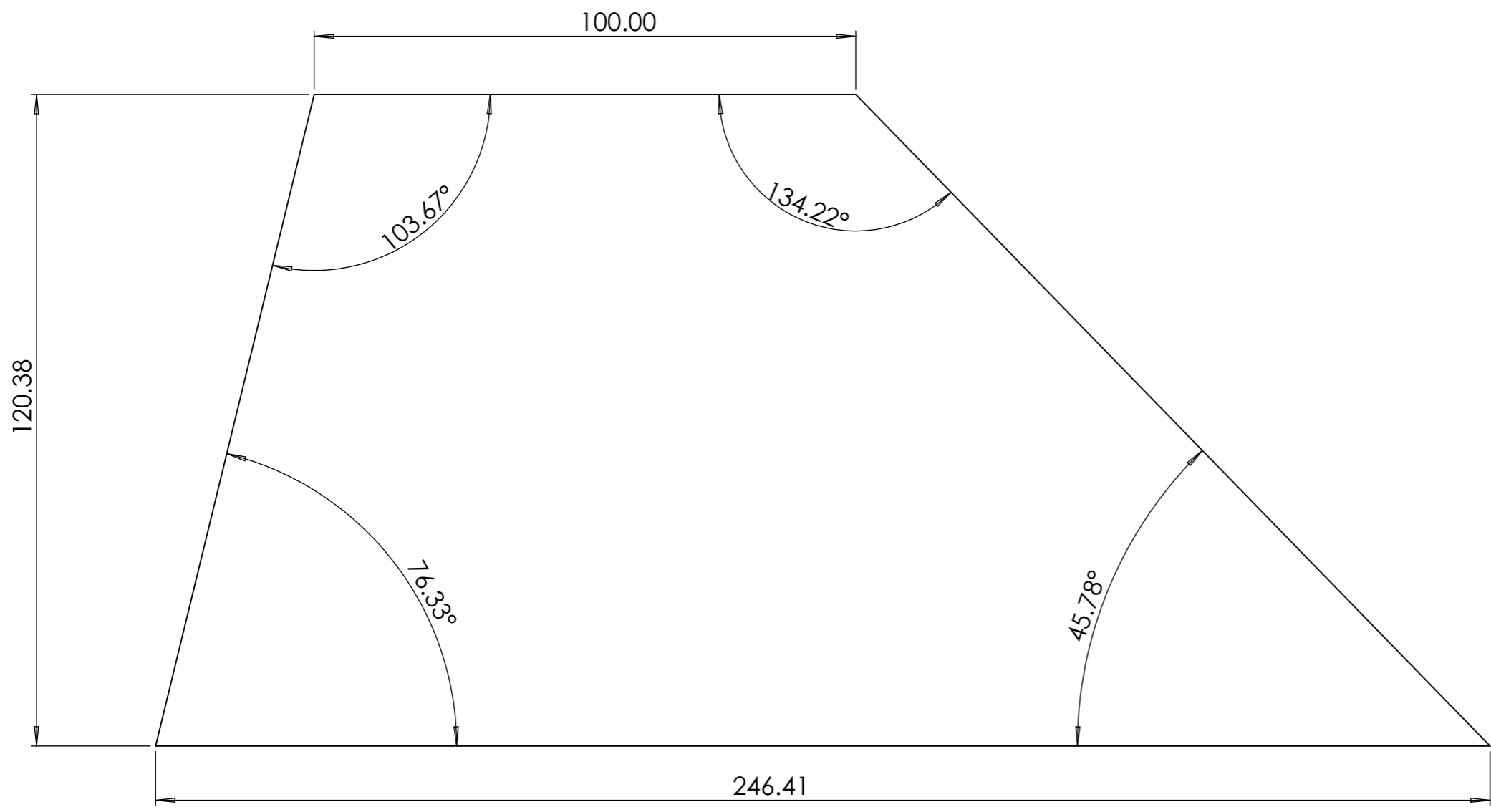
Title: SES6633-RADIUS SAW BLADE CHANGE STAND-ASSY2			
Drawing Number: SES6633-RADIUS SAW BLADE CHANGE STAND-ROTATION ARM			
Checked: G.F.Phillips		Drawn By: G.F.Phillips	
Date: 15/12/2022		Status: Released	
Sheet Size: A3	Scale: 1:10	Revision: A	Sheet Number: 3 of 13

Notes:  
 Quantity required - 2  
 Material - LCS 16mm THK Plate

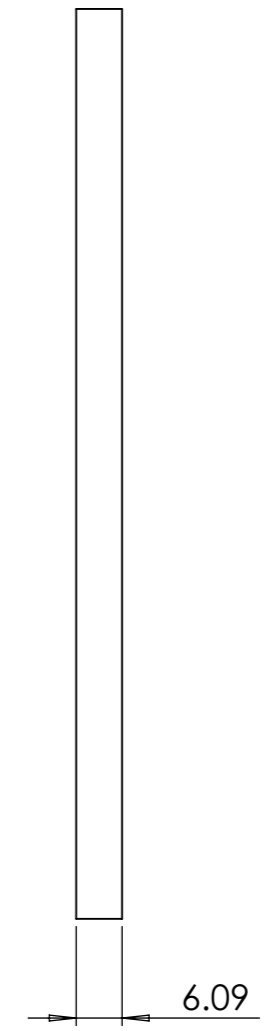



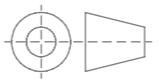
 Ventarus Engineering Services Ltd. The information contained in this drawing is the sole property of Ventarus Engineering Services Ltd. Any reproduction in part or as a whole without the written permission of Ventarus Engineering Services Ltd is strictly prohibited.	Projection: Third Angle 	<b>Title:</b> SES6633-RAIDUS SAW BLADE CHANGE STAND-BEARING PLATE		
	All dimensions in millimetres Do not alter CAD drawings Do not scale	<b>Drawing Number:</b> SES6633-MAIN ASSY-DET014		
	Tolerances Unless stated otherwise Linear: ±0.25mm Angular: ±0.05°	<b>Checked:</b> G.F.Phillips <b>Date:</b> 15/12/2022	<b>Drawn By:</b> G.F.Phillips <b>Status:</b> Released	
		<b>Sheet Size:</b> A3 <b>Scale:</b> 1:1	<b>Revision:</b> A	<b>Sheet Number:</b> 4 of 13



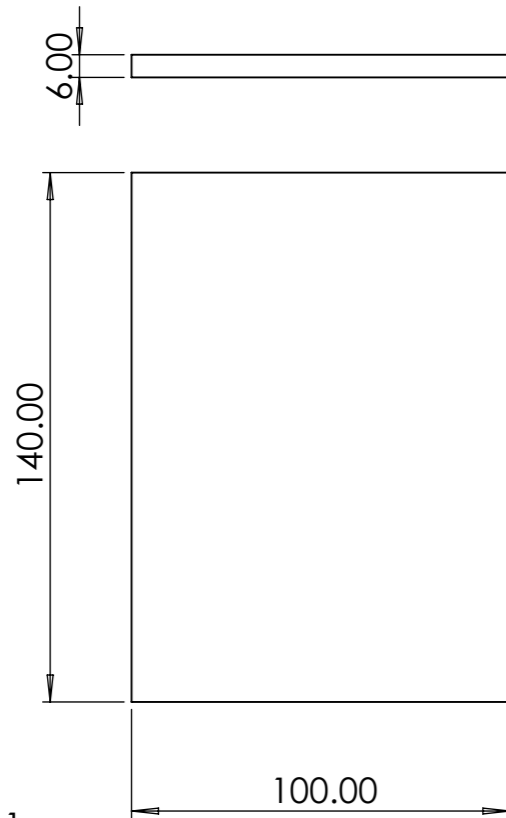


Notes:  
 Quantity required - 2  
 Material - LCS 6mm THK Plate



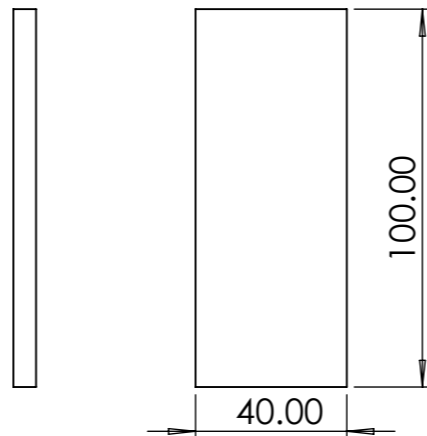
 Ventarus Engineering Services Ltd. The information contained in this drawing is the sole property of Ventarus Engineering Services Ltd. Any reproduction in part or as a whole without the written permission of Ventarus Engineering Services Ltd is strictly prohibited.	Projection: Third Angle 	<b>Title:</b> SES6633-RAIDUS SAW BLADE CHANGE STAND-GUSSET PLATE		
	All dimensions in millimetres Do not alter CAD drawings Do not scale	<b>Drawing Number:</b> SES6633-MAIN ASSY-DET014		
	Tolerances Unless stated otherwise  <b>Linear: ±0.25mm</b>  <b>Angular: ±0.05°</b>	<b>Checked:</b> G.F.Phillips	<b>Drawn By:</b> G.F.Phillips	
		<b>Date:</b> 15/12/2022	<b>Status:</b> Released	
	<b>Sheet Size:</b> A3	<b>Scale:</b> 1:1	<b>Revision:</b> A	<b>Sheet Number:</b> 5 of 13

**LATCH BASE**



Notes:  
 Quantity required - 1  
 Material - LCS 6mm THK Plate

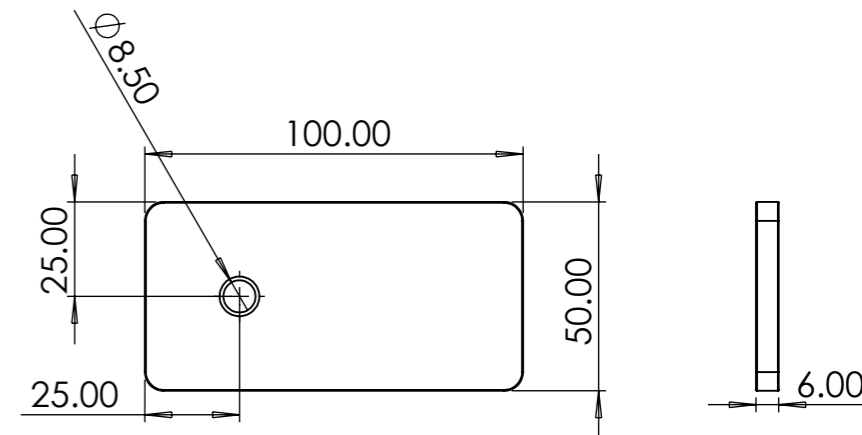
**LATCH LIP**



Notes:  
 Quantity required - 1  
 Material - LCS 6mm THK Plate

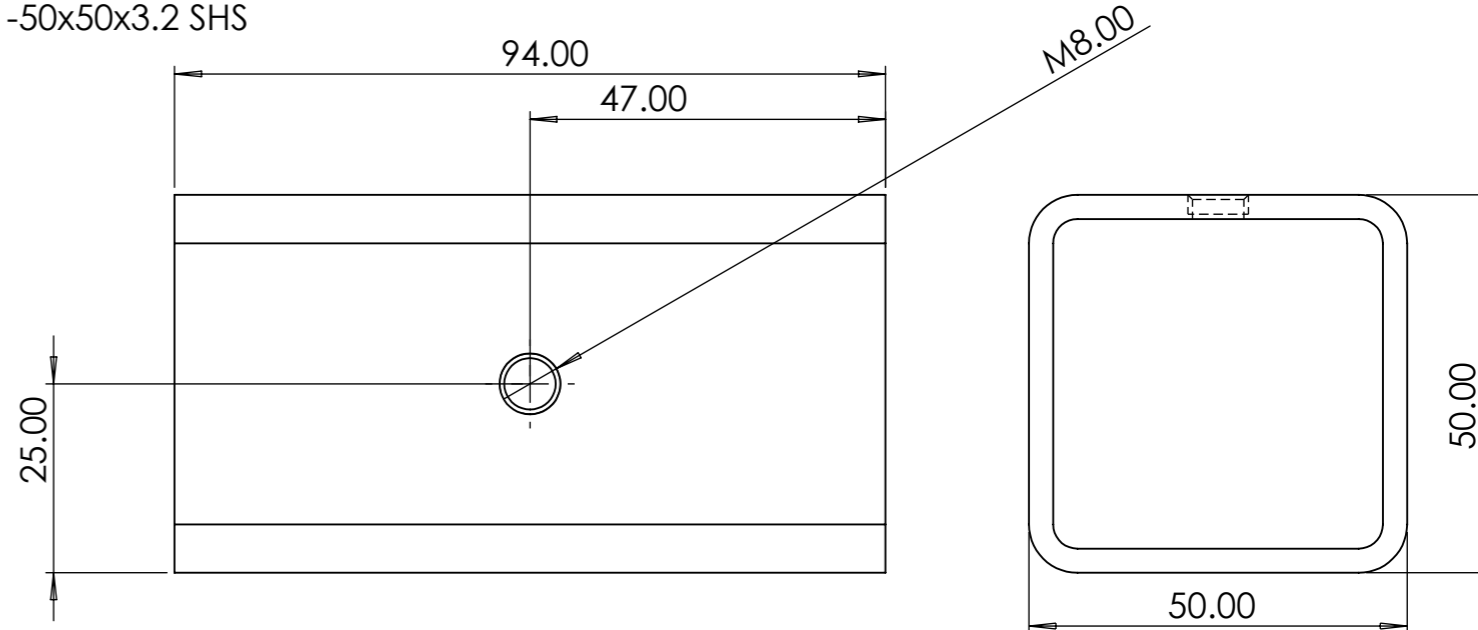
**LATCH LOCK PLATE**

Notes:  
 Quantity required - 1  
 Material - LCS 6mm THK Plate



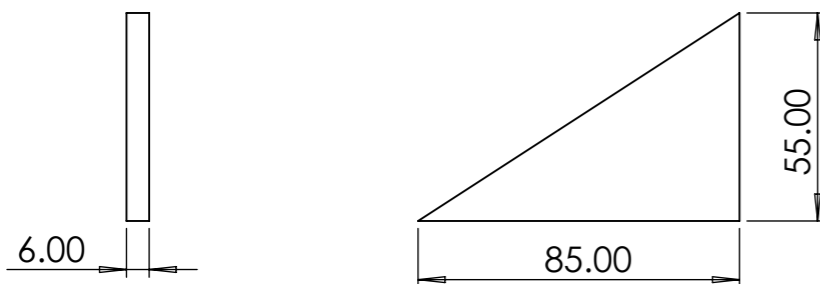
**LATCH BOX SECTION**


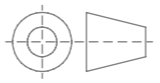
Notes:  
 Quantity required - 1  
 Material - 50x50x3.2 SHS

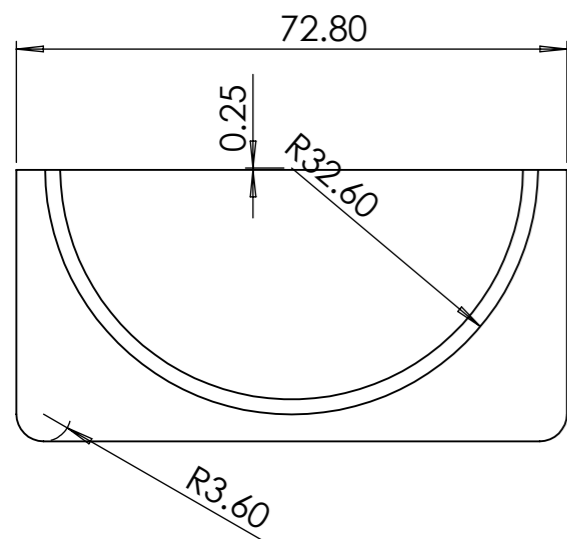
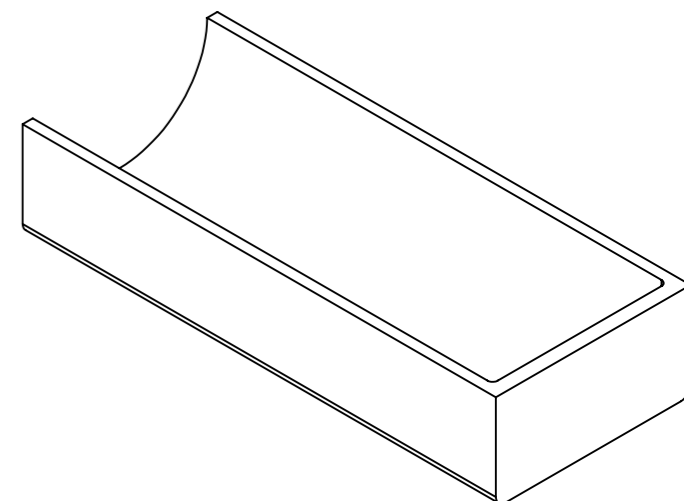
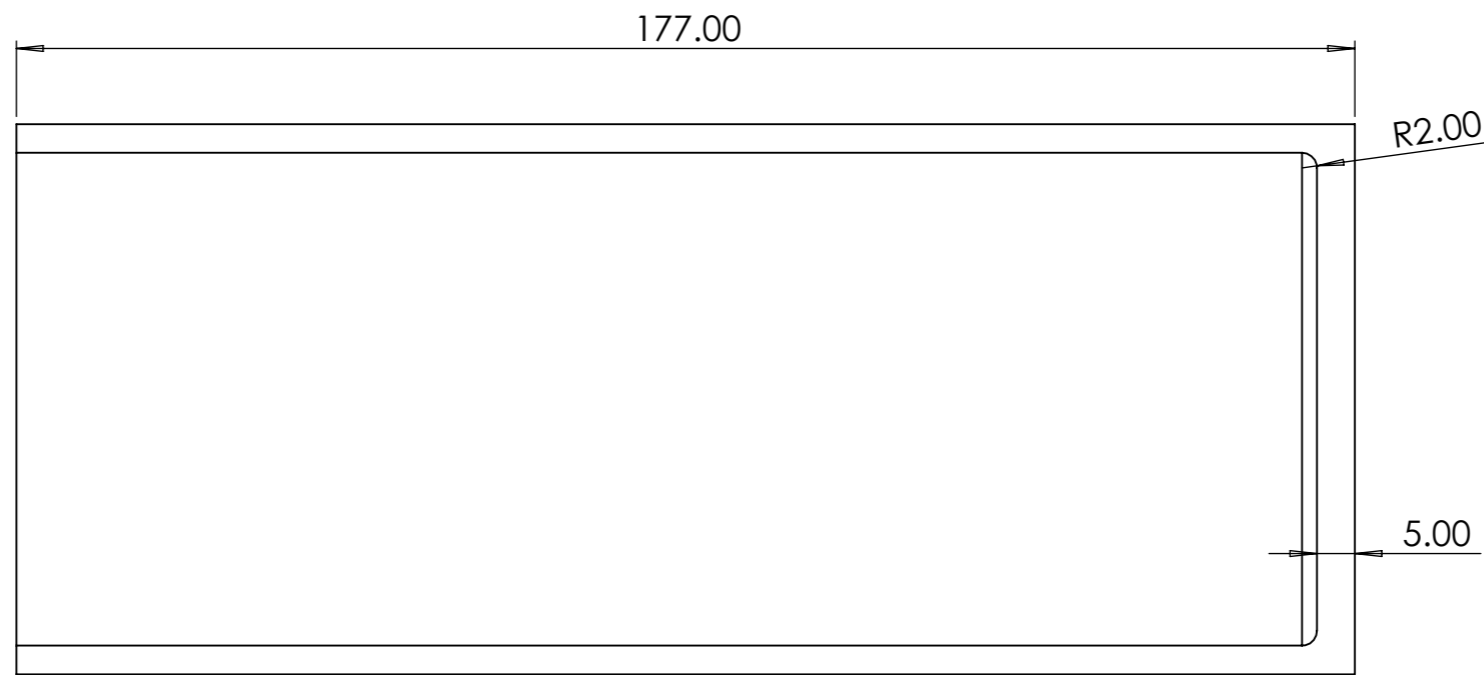


**LATCH GUSSET**

Notes:  
 Quantity required - 2  
 Material - LCS 6mm THK Plate



 <p>Ventarus Engineering Services Ltd.</p>	Projection: Third Angle 	Title: SES6633-RAIDUS SAW BLADE CHANGE STAND-LATCH PARTS		
	All dimensions in millimetres Do not alter CAD drawings Do not scale	Drawing Number: SES6633-MAIN ASSY-DET015-DET016		
The information contained in this drawing is the sole property of Ventarus Engineering Services Ltd. Any reproduction in part or as a whole without the written permission of Ventarus Engineering Services Ltd is strictly prohibited.	Tolerances Unless stated otherwise  Linear: ±0.25mm Angular: ±0.05°	Checked: G.F.Phillips	Drawn By: G.F.Phillips	
		Date: 15/12/2022	Status: Released	
	Sheet Size: A3	Scale: 1:2	Revision: A	Sheet Number: 6 of 13


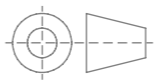


Notes:

This part gets Glued/Screwed into Cut box section parts on rotation frame.

Quantity required - 2  
(1 upper)  
(1 Lower)

Material - Nylon/HDPE

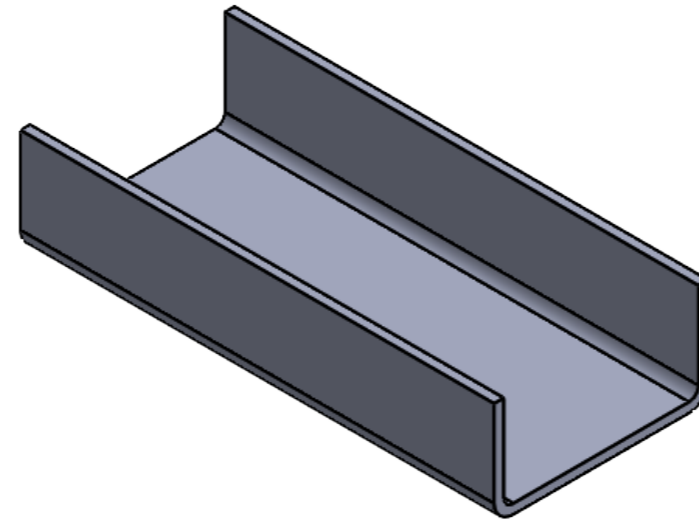
 Ventarus Engineering Services Ltd. The information contained in this drawing is the sole property of Ventarus Engineering Services Ltd. Any reproduction in part or as a whole without the written permission of Ventarus Engineering Services Ltd is strictly prohibited.	Projection: Third Angle 	<b>Title:</b> SES6633-RAIDUS SAW BLADE CHANGE STAND- SA01 - NYLON/HDPE INSERT	
	All dimensions in millimetres Do not alter CAD drawings Do not scale	<b>Drawing Number:</b> SES6633-ROTATION ARM-SA01-DET002	
Tolerances Unless stated otherwise  Linear: ±0.25mm Angular: ±0.05°	<b>Checked:</b> G.F.Phillips	<b>Drawn By:</b> G.F.Phillips	
	<b>Date:</b> 15/12/2022	<b>Status:</b> Released	
	<b>Sheet Size:</b> A3	<b>Scale:</b> 1:1	<b>Revision:</b> A
		<b>Sheet Number:</b> 7 of 13	

Notes:

Cut from 80x80x3.6 SHS

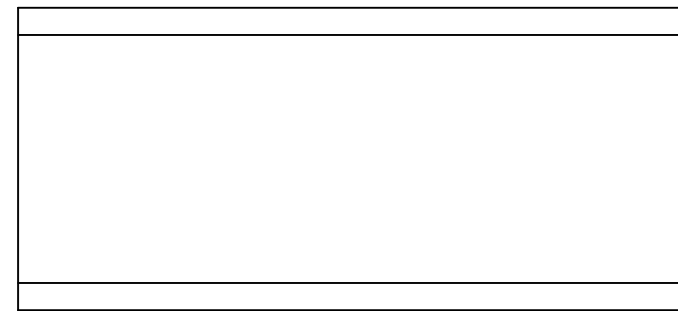
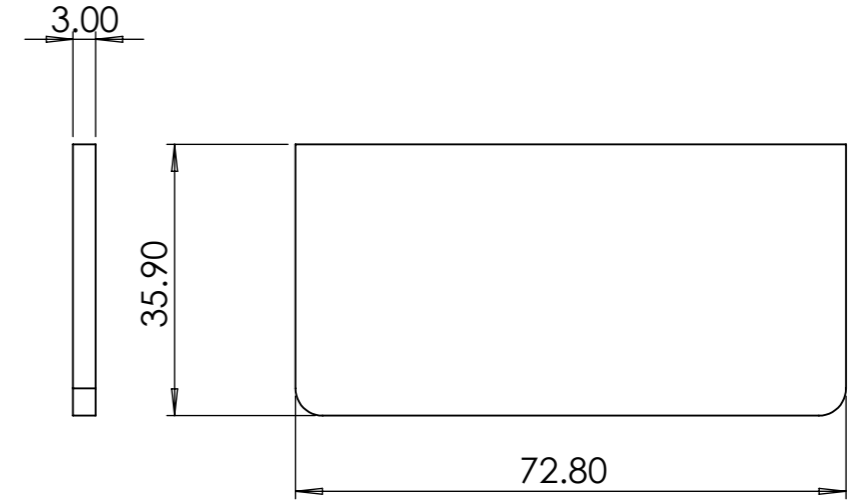
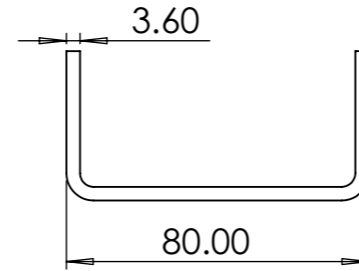
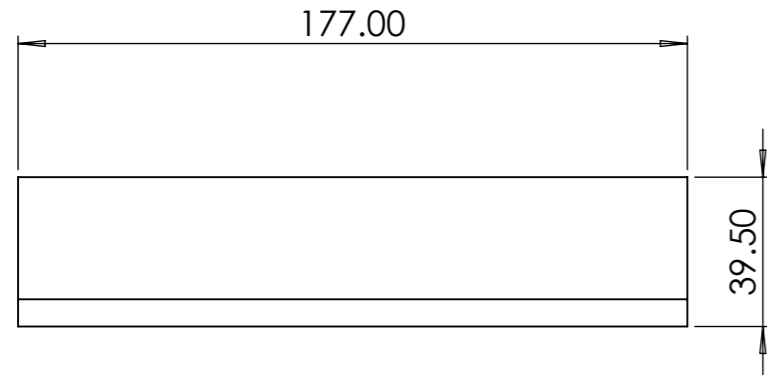
Quantity required - 2  
(1 upper)  
(1 Lower)

Material - LCS 80x80x3.6 SHS



END CAP

4 Required



The information contained in this drawing is the sole property of Ventarus Engineering Services Ltd. Any reproduction in part or as a whole without the written permission of Ventarus Engineering Services Ltd is strictly prohibited.

Projection: Third Angle



All dimensions in millimetres  
Do not alter CAD drawings  
Do not scale

Tolerances  
Unless stated otherwise

Linear: ±0.25mm

Angular: ±0.05°

Title: SES6633-RAIDUS SAW BLADE CHANGE STAND- SA01  
- OUTER SHELL

Drawing Number: SES6633-ROTATION ARM-SA01-DET003-04

Checked: G.F.Phillips

Drawn By: G.F.Phillips

Date: 15/12/2022

Status: Released

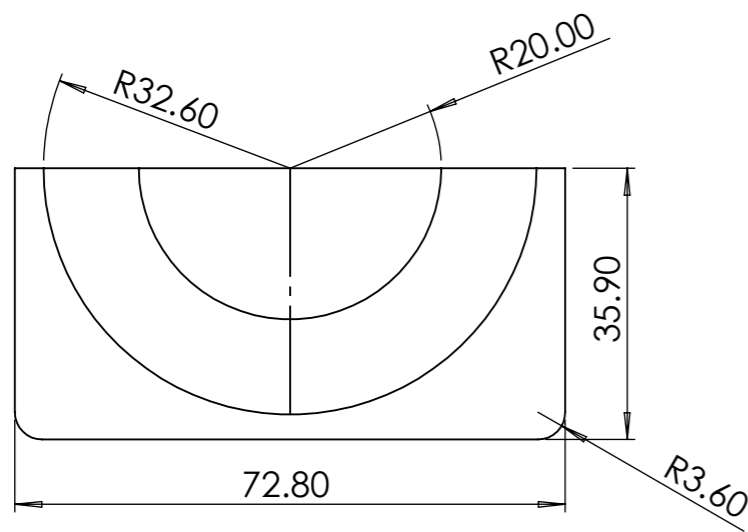
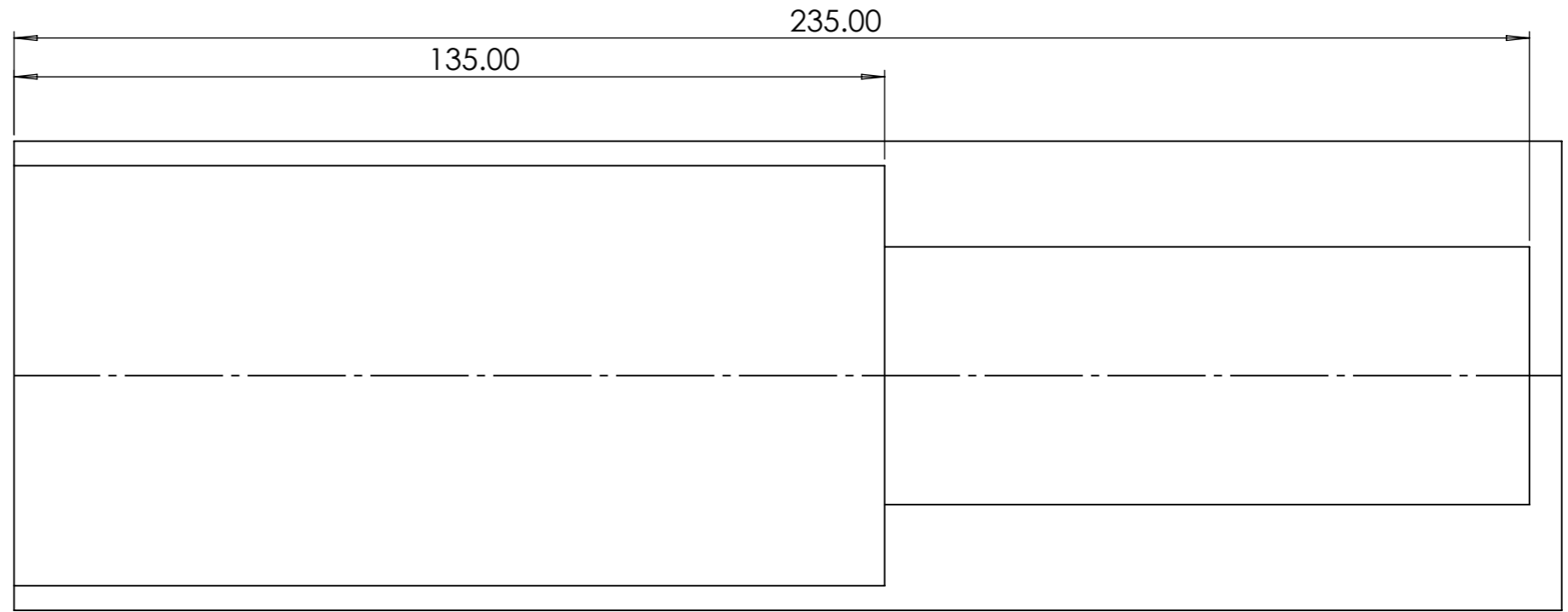
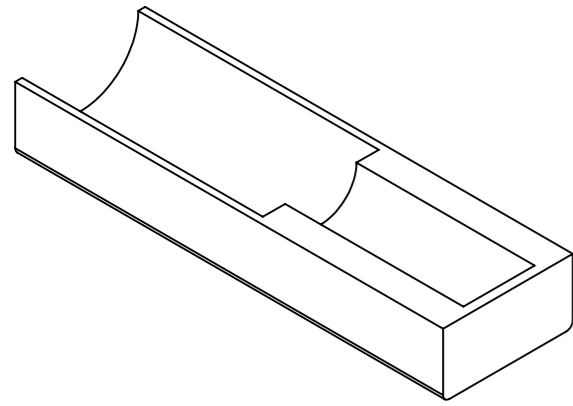
Sheet Size: A3

Scale: 1:2

Revision: A

Sheet Number: 8 of 13





Notes:

This part gets Glued/Screwed into Cut box section parts on rotation frame.

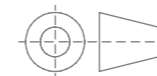
Quantity required - 2  
 (1 upper)  
 (1 Lower)

Material - Nylon/HDPE



The information contained in this drawing is the sole property of Ventarus Engineering Services Ltd. Any reproduction in part or as a whole without the written permission of Ventarus Engineering Services Ltd is strictly prohibited.

Projection: Third Angle



All dimensions in millimetres  
 Do not alter CAD drawings  
 Do not scale

Tolerances  
 Unless stated otherwise

Linear: ±0.25mm

Angular: ±0.05°

Title: SES6633-RAIDUS SAW BLADE CHANGE STAND- SA02  
 - NYLON/HDPE INSERT

Drawing Number: SES6633-ROTATION ARM-SA01-DET002

Checked: G.F.Phillips

Drawn By: G.F.Phillips

Date: 15/12/2022

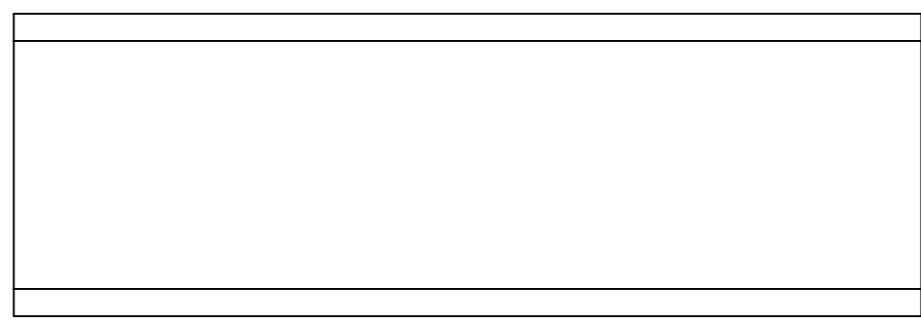
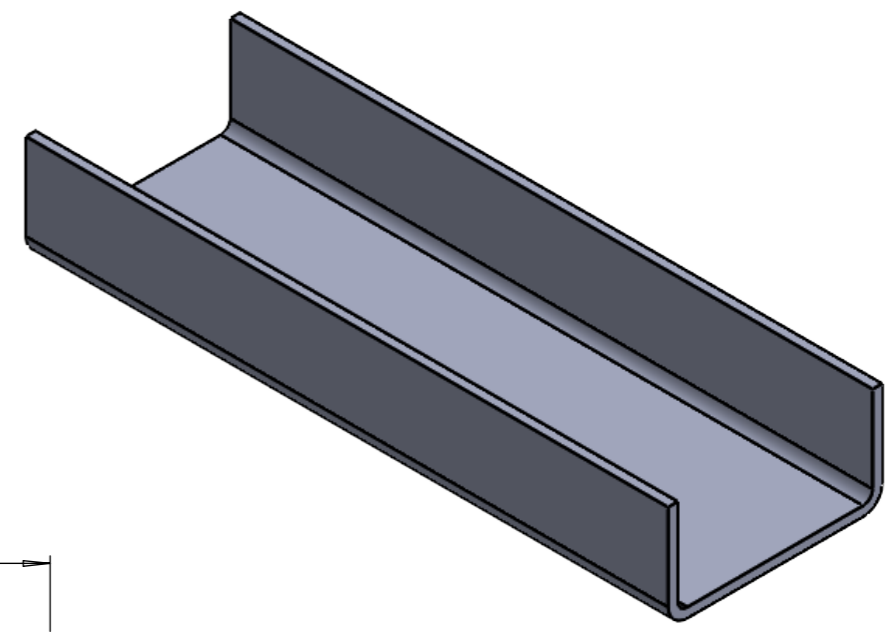
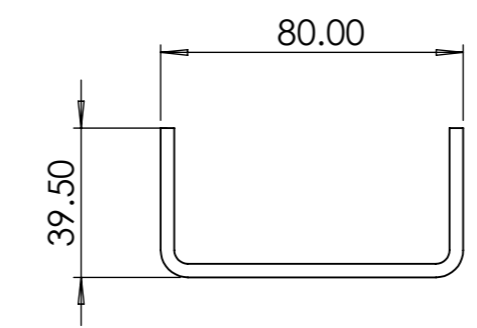
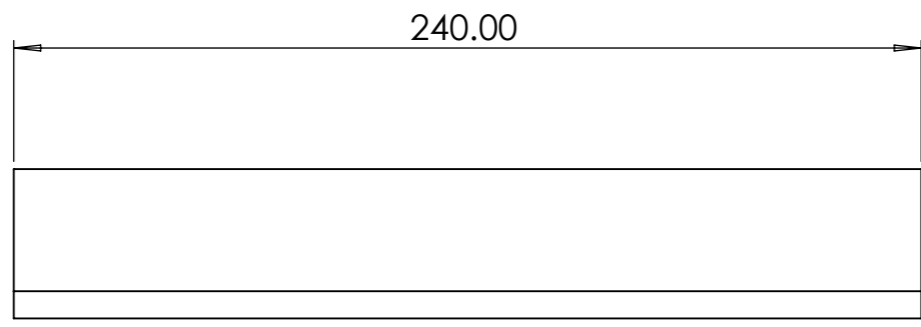
Status: Released

Sheet Size: A3


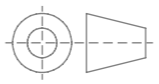
Scale: 1:1

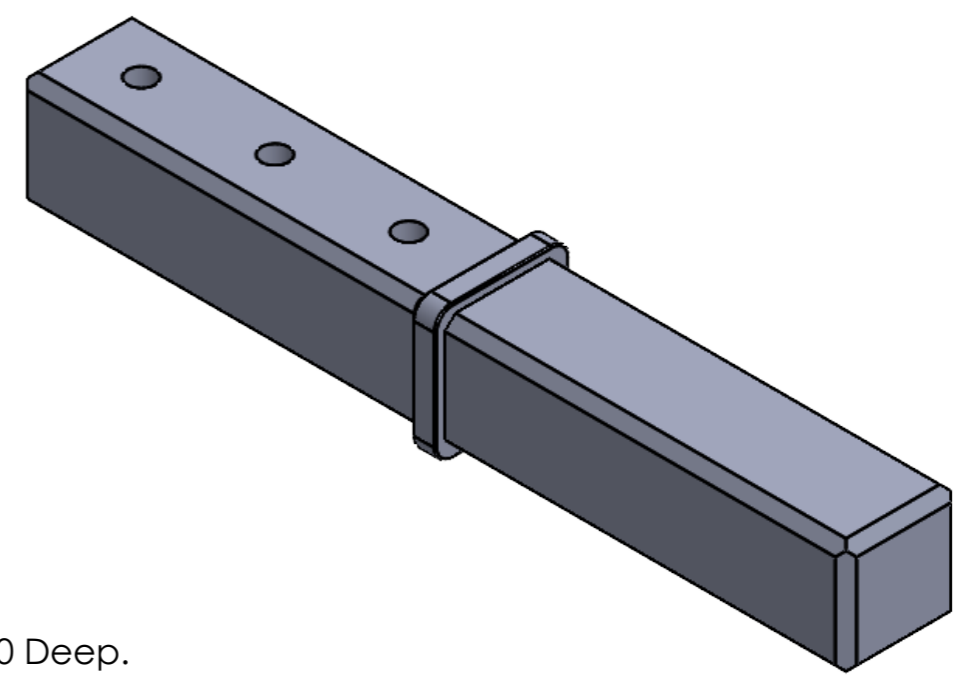
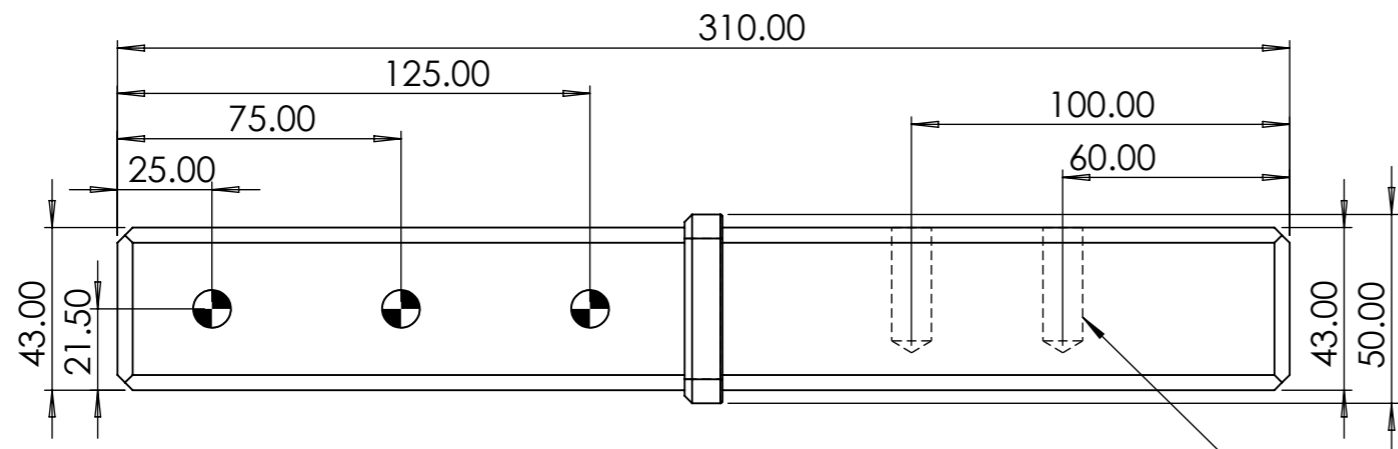
Revision: A

Sheet Number: 9 of 13

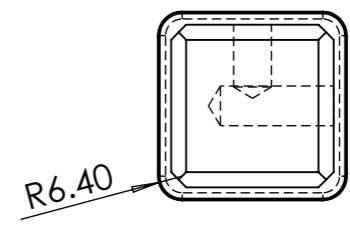
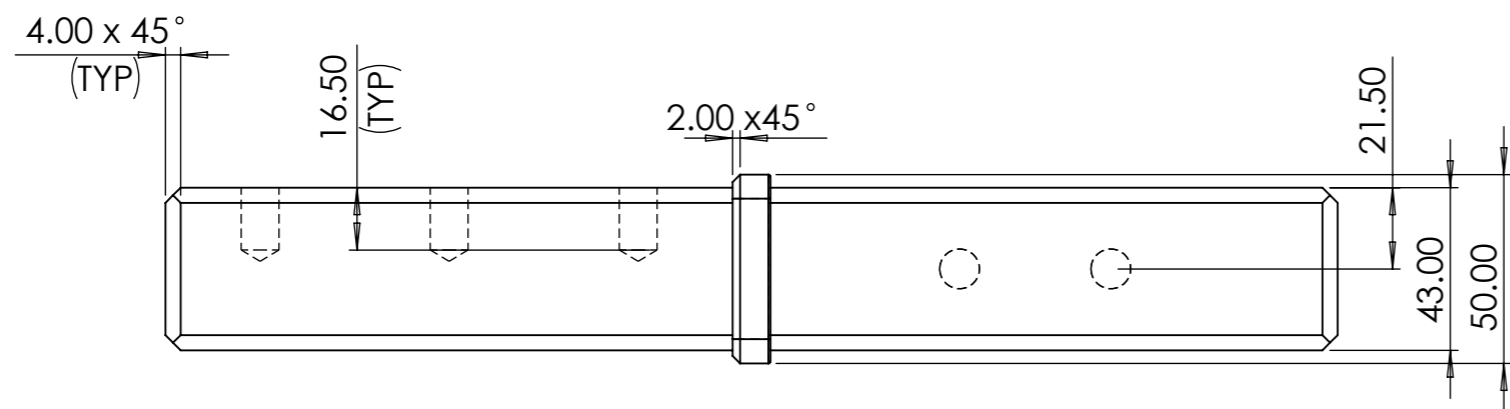


Notes:  
 Cut from 80x80x3.6 SHS  
 Quantity required - 2  
 (1 upper)  
 (1 Lower)  
 Material - LCS 80x80x3.6 SHS


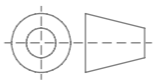
 Ventarus Engineering Services Ltd.	Projection: Third Angle 	<b>Title:</b> SES6633-RAIDUS SAW BLADE CHANGE STAND- SA02-SHELL	
	All dimensions in millimetres Do not alter CAD drawings Do not scale	<b>Drawing Number:</b> SES6633-ROTATION ARM-SA021-DET002	
Tolerances Unless stated otherwise	Linear: ±0.25mm Angular: ±0.05°	<b>Checked:</b> G.F.Phillips	<b>Drawn By:</b> G.F.Phillips
The information contained in this drawing is the sole property of Ventarus Engineering Services Ltd. Any reproduction in part or as a whole without the written permission of Ventarus Engineering Services Ltd is strictly prohibited.	<b>Date:</b> 15/12/2022		<b>Status:</b> Released
	<b>Sheet Size:</b> A3	<b>Scale:</b> 1:2	<b>Revision:</b> A
	<b>Sheet Number:</b> 10 of 13		



M12 Thread 30 Deep.

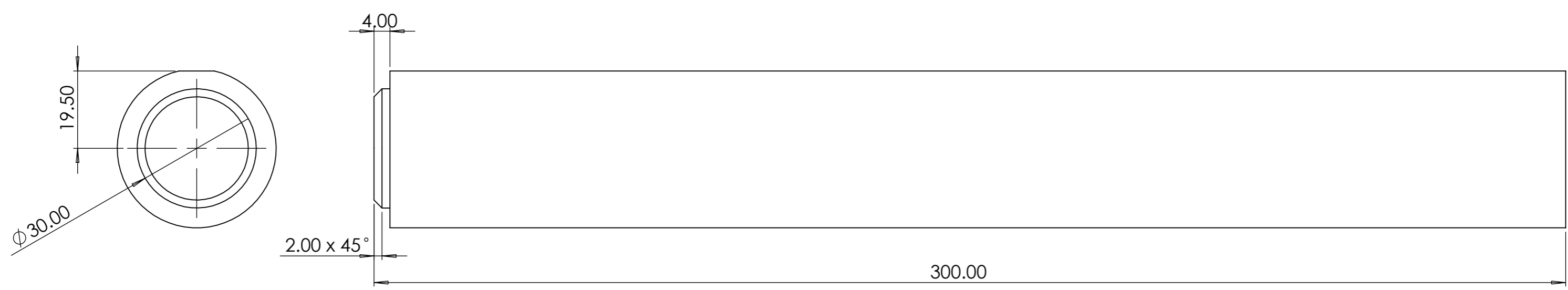
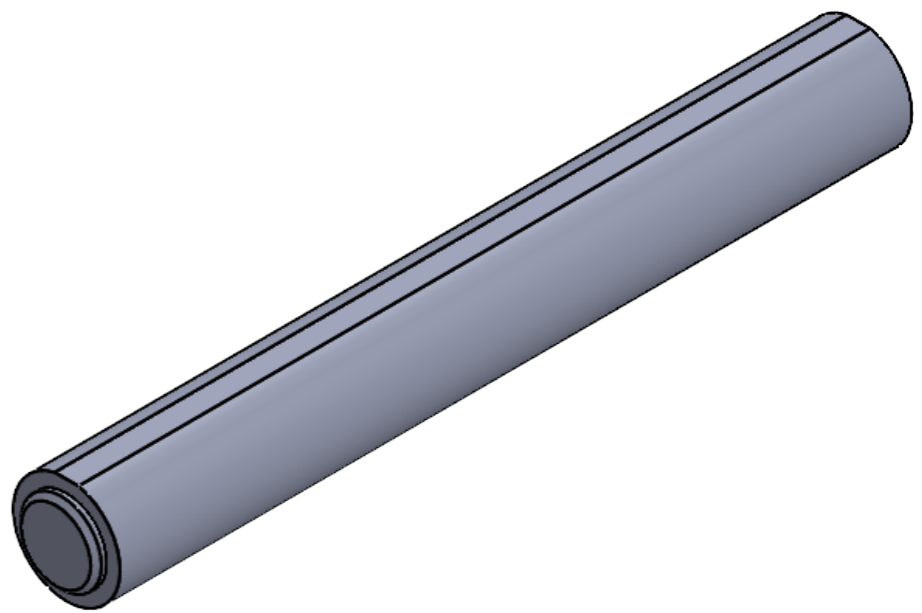


Notes:  
 Dowel Holes can be drilled after welding to Rotation Frame.  
 Quantity required - 1  
 LCS 50x50 Flat-Bar


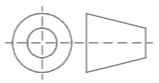
 Ventarus Engineering Services Ltd. <small>The information contained in this drawing is the sole property of Ventarus Engineering Services Ltd. Any reproduction in part or as a whole without the written permission of Ventarus Engineering Services Ltd is strictly prohibited.</small>	Projection: Third Angle 	<b>Title:</b> SES6633-RAIDUS SAW BLADE CHANGE STAND-ASSY2 - MAIN SHAFT CONNECTION	
	All dimensions in millimetres Do not alter CAD drawings Do not scale	<b>Drawing Number:</b> SES6633-ROTATION ARM-DET032	
Tolerances Unless stated otherwise Linear: ±0.25mm Angular: ±0.05°	<b>Checked:</b> G.F.Phillips	<b>Drawn By:</b> G.F.Phillips	
	<b>Date:</b> 15/12/2022	<b>Status:</b> Released	
	<b>Sheet Size:</b> A3	<b>Scale:</b> 1:1	<b>Revision:</b> A
			<b>Sheet Number:</b> 11 of 13

14 13 12 11 10 9 8 7 6 5 4 3 2 1

H  
G  
F  
E  
D  
C  
B  
A

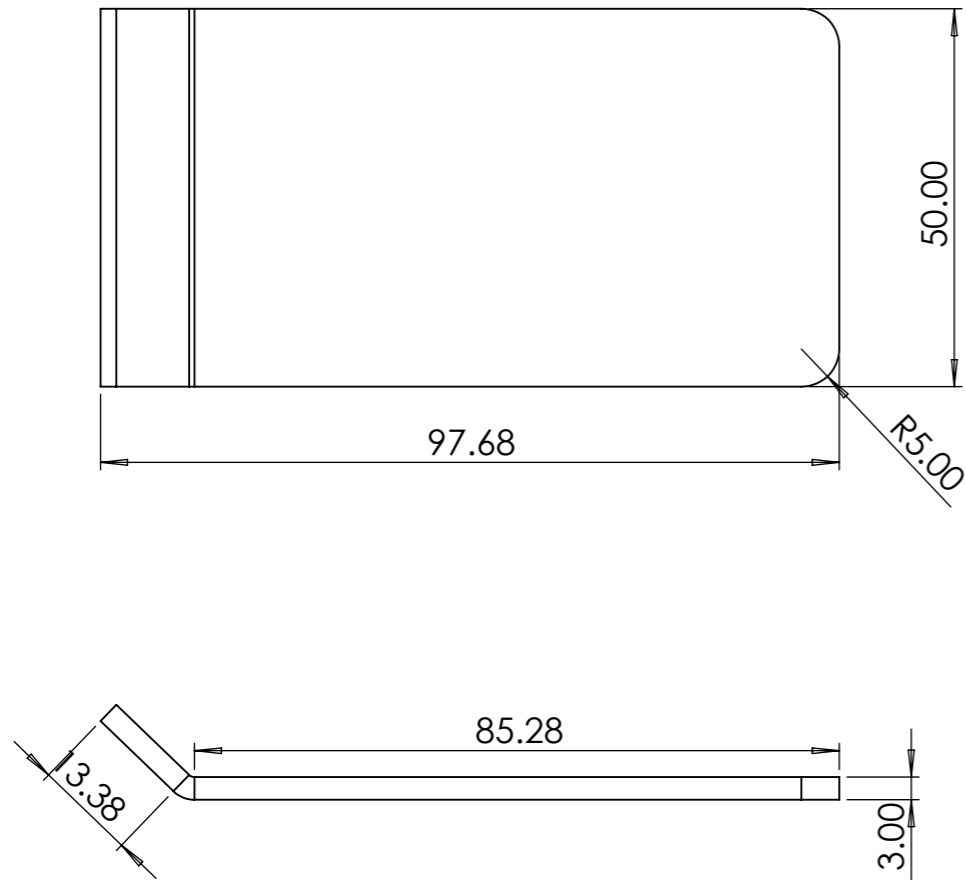


Notes:  
  
Quantity required - 1  
EN24 -  $\phi$  40 Round bar.

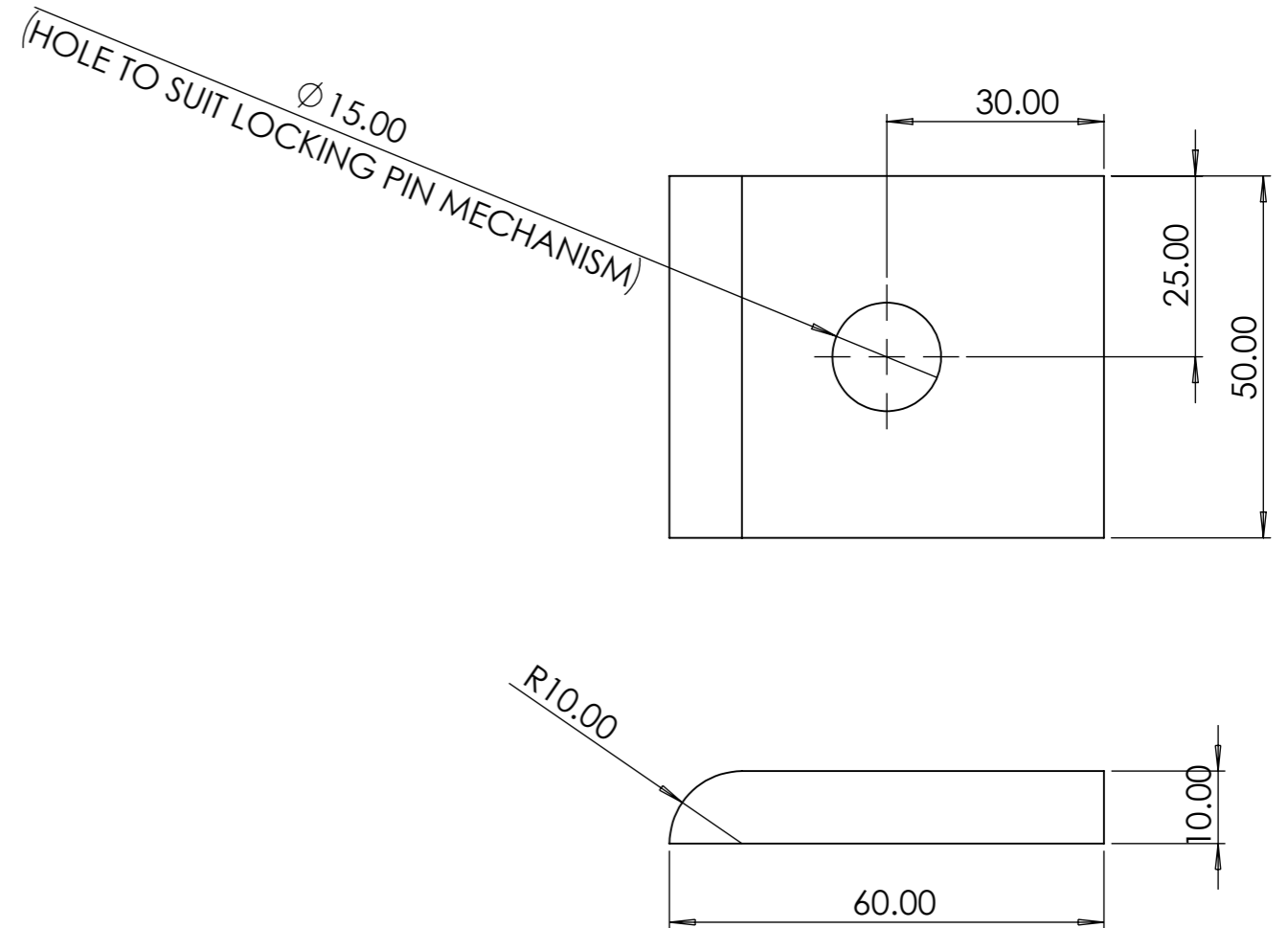
 Ventarus Engineering Services Ltd	Projection: Third Angle 	Title: SES6633-RAIDUS SAW BLADE CHANGE STAND-ASSY2 - ROTATION SHAFT	
	All dimensions in millimetres Do not alter CAD drawings Do not scale	Drawing Number: SES6633-ROTATION ARM-DET033	
The information contained in this drawing is the sole property of Ventarus Engineering Services Ltd. Any reproduction in part or as a whole without the written permission of Ventarus Engineering Services Ltd is strictly prohibited.	Tolerances Unless stated otherwise  Linear: $\pm 0.25\text{mm}$  Angular: $\pm 0.05^\circ$	Checked: G.F.Phillips  Date: 15/12/2022	Drawn By: G.F.Phillips  Status: Released
		Sheet Size: A3 Scale: 1:1	Revision: A Sheet Number: 12 of 13

14 13 12 11 10 9 8 7 6 5 4 3 2 1

Lower Arm Guide



Lower Arm Lock Plate



Notes:

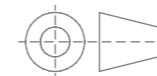
Quantity required - 1  
LCS 3mm THK

This drawing was produced for Skyner Engineering Services Ltd. by Ventarus Engineering Services Ltd.



The information contained in this drawing is the sole property of Ventarus Engineering Services Ltd. Any reproduction in part or as a whole without the written permission of Ventarus Engineering Services Ltd is strictly prohibited.

Projection: Third Angle



All dimensions in millimetres  
Do not alter CAD drawings  
Do not scale

Tolerances  
Unless stated otherwise

Linear:  $\pm 0.25\text{mm}$

Angular:  $\pm 0.05^\circ$

Title: SES6633-RAIDUS SAW BLADE CHANGE STAND-ASSY1- LOWER LOCK AND GUIDE

Drawing Number: SES6633-LOWER LOCK AND ARM-DET021-DET022

Checked: G.F.Phillips

Drawn By: G.F.Phillips

Date: 15/12/2022

Status: Released

Sheet Size: A3

Scale: 1:1

Revision: A

Sheet Number: 13 of 13