

Notes:

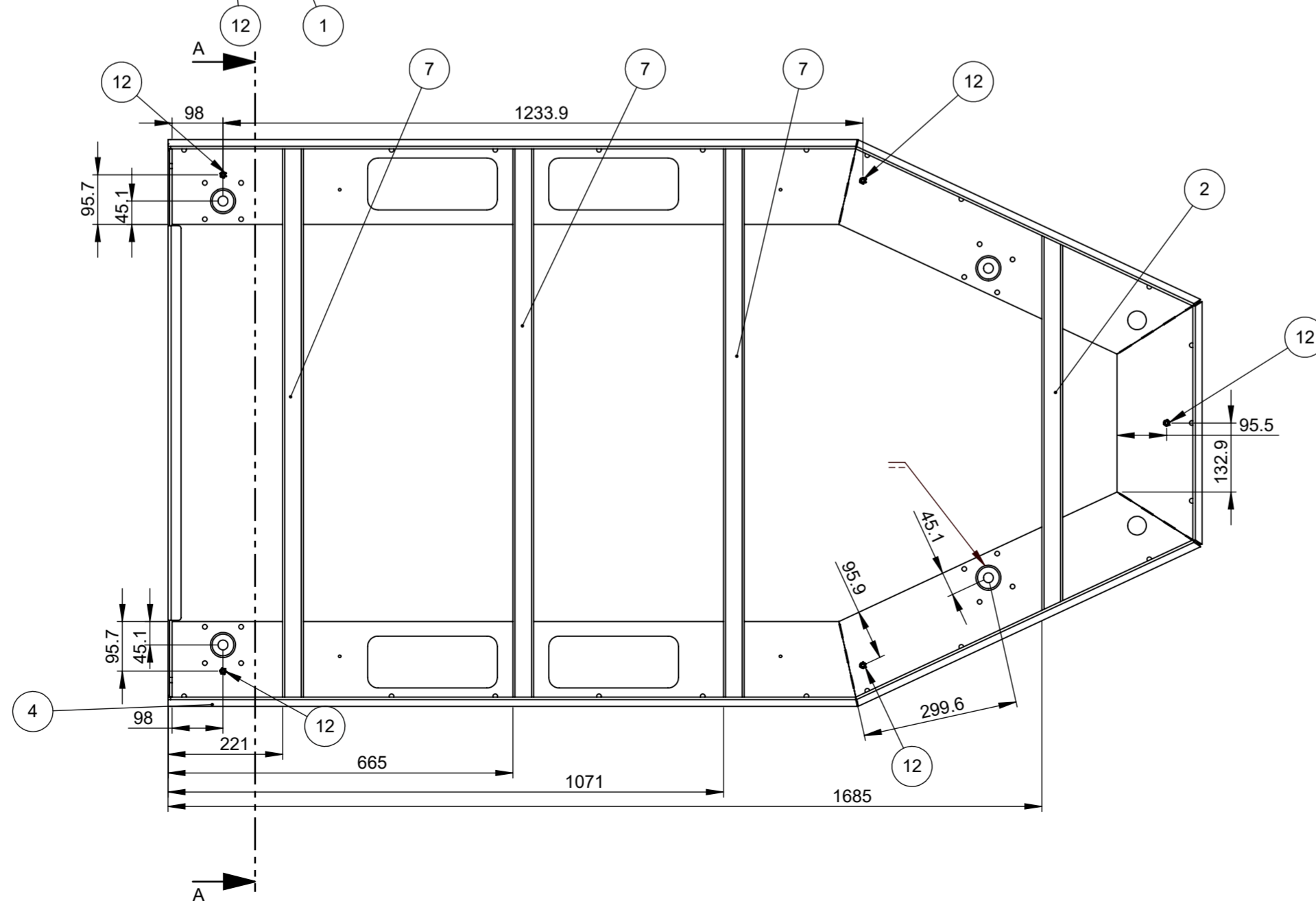
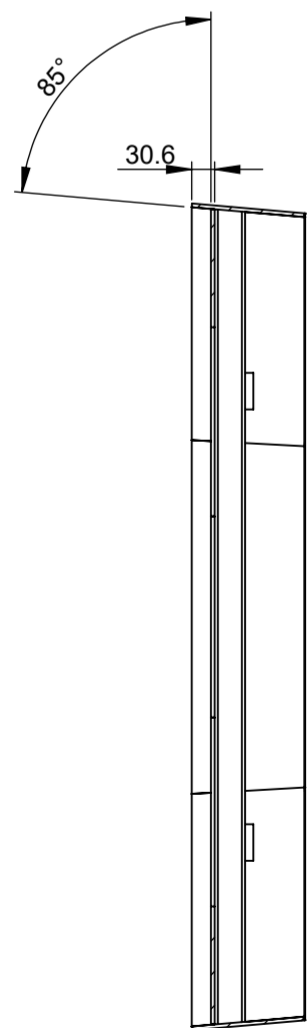
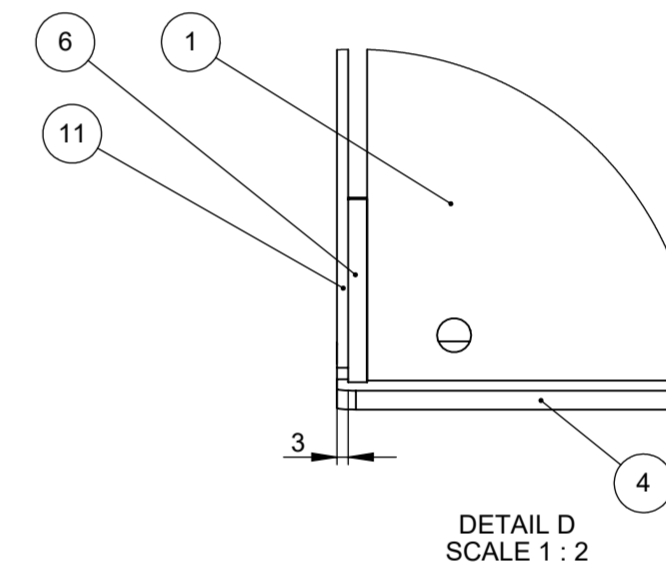
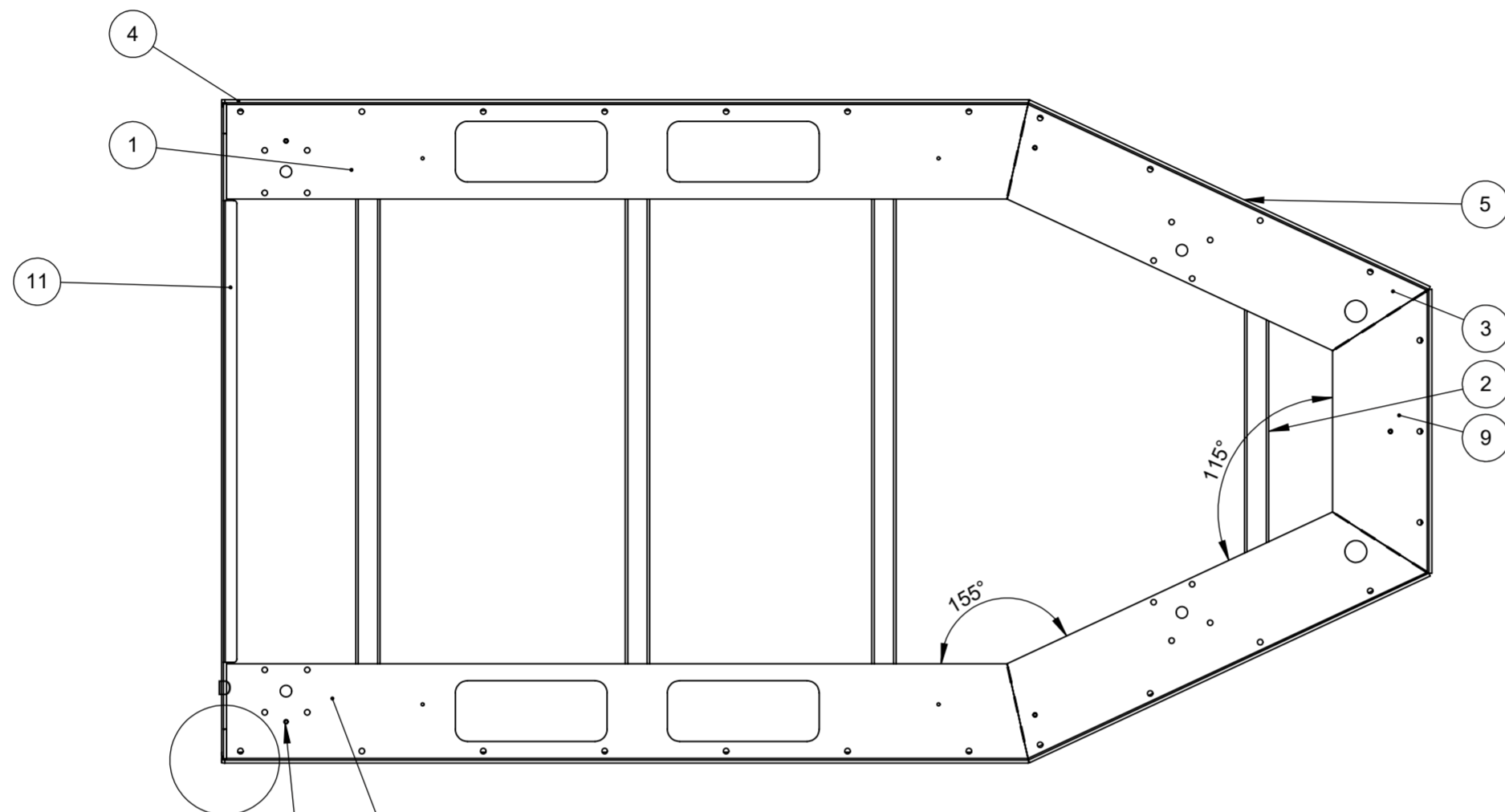
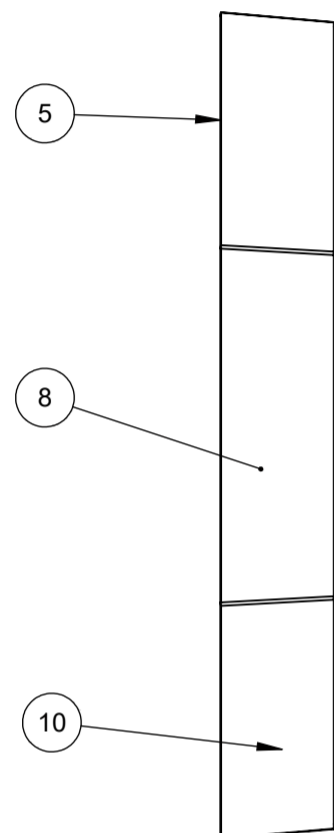
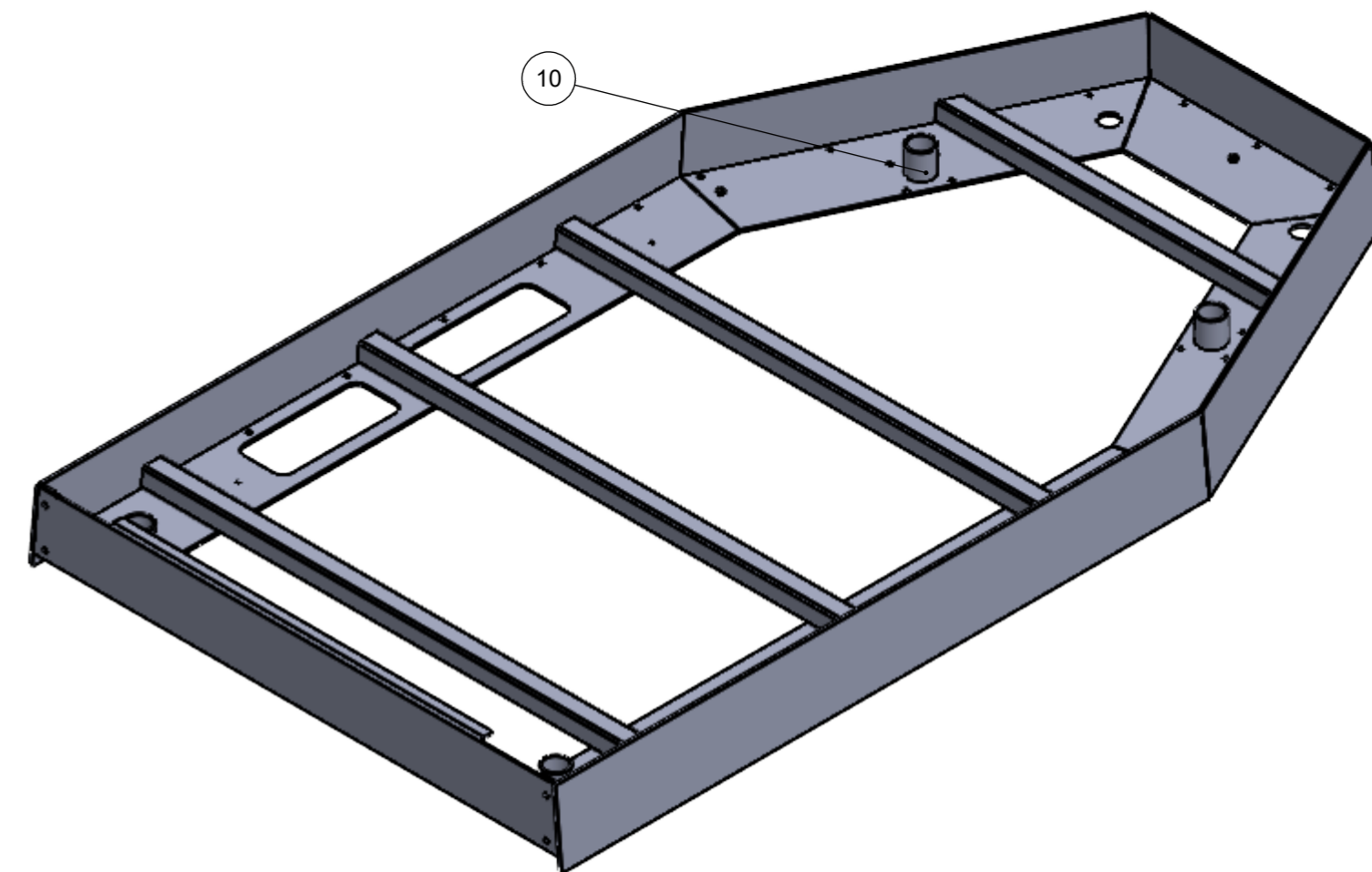
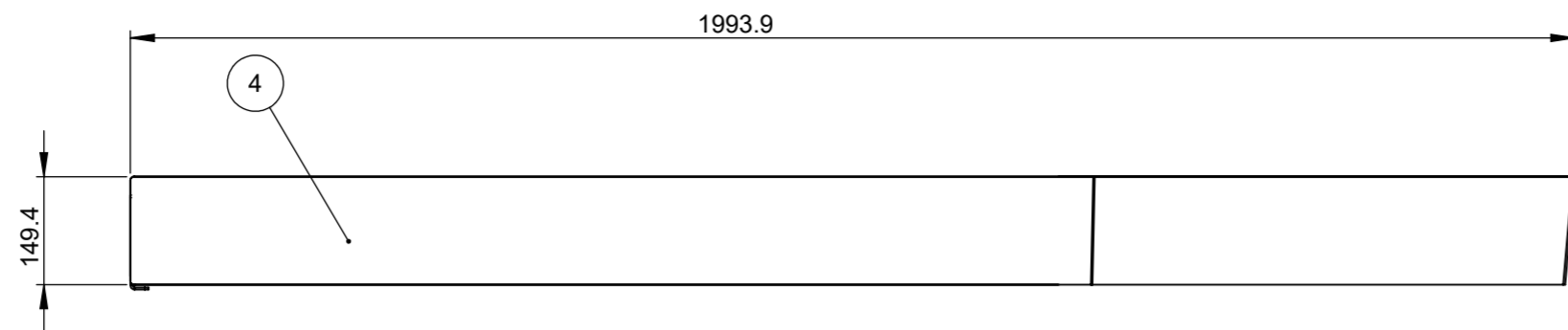
Ref A: Weld to start on inner-most edge. Grind weld Flush.

Process: General and Weld Assembly

Material: LCS SJ275

Finish: Strictly NO tooling marks throughout component.

All External Butt welds on seams to be ground to a radius for aesthetics.



ITEM NO.	PART NUMBER	DESCRIPTION	QTY.
1	Mk3 Chassis Horizontal Front Shelf	OC001	2
2	Mk3 Chassis Back Cross Beam	OC005	1
3	Mk3 Chassis Horizontal Middle Shelf	OC002	2
4	Mk3 Chassis Vertical Front Panel	OC007	2
5	Mk3 Chassis Vertical Middle Panel	OC008	2
6	Mk3 Chassis Fixing Plate	OC010	2
7	Mk3 Chassis Front Cross Beam	OC004	3
8	Mk3 Chassis Vertical Back Panel	OC009	1
9	Mk3 Chassis Horizontal Back Shelf	OC003	1
10	Wheel Tube 51mm	OC011	4
11	Outdoor Chassis Front Cover	OC006	1
12	HWHN-M6-A2 v1	M6 Nut	5

SECTION A-A

Notes:

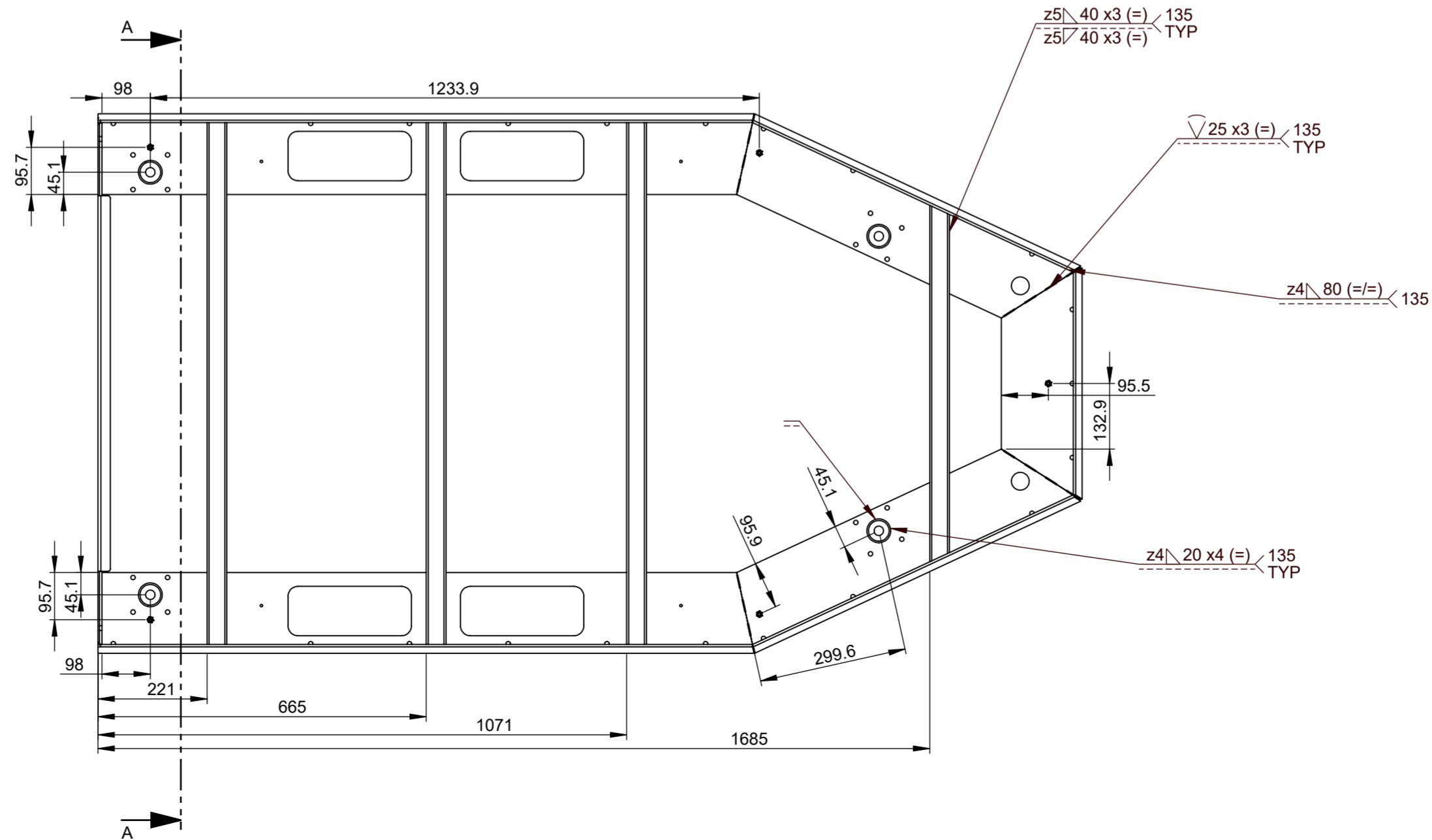
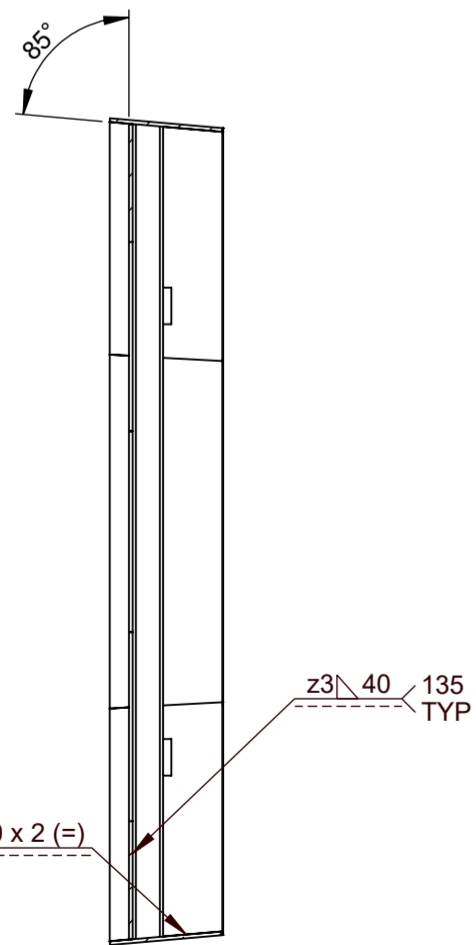
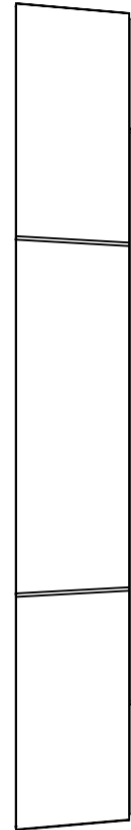
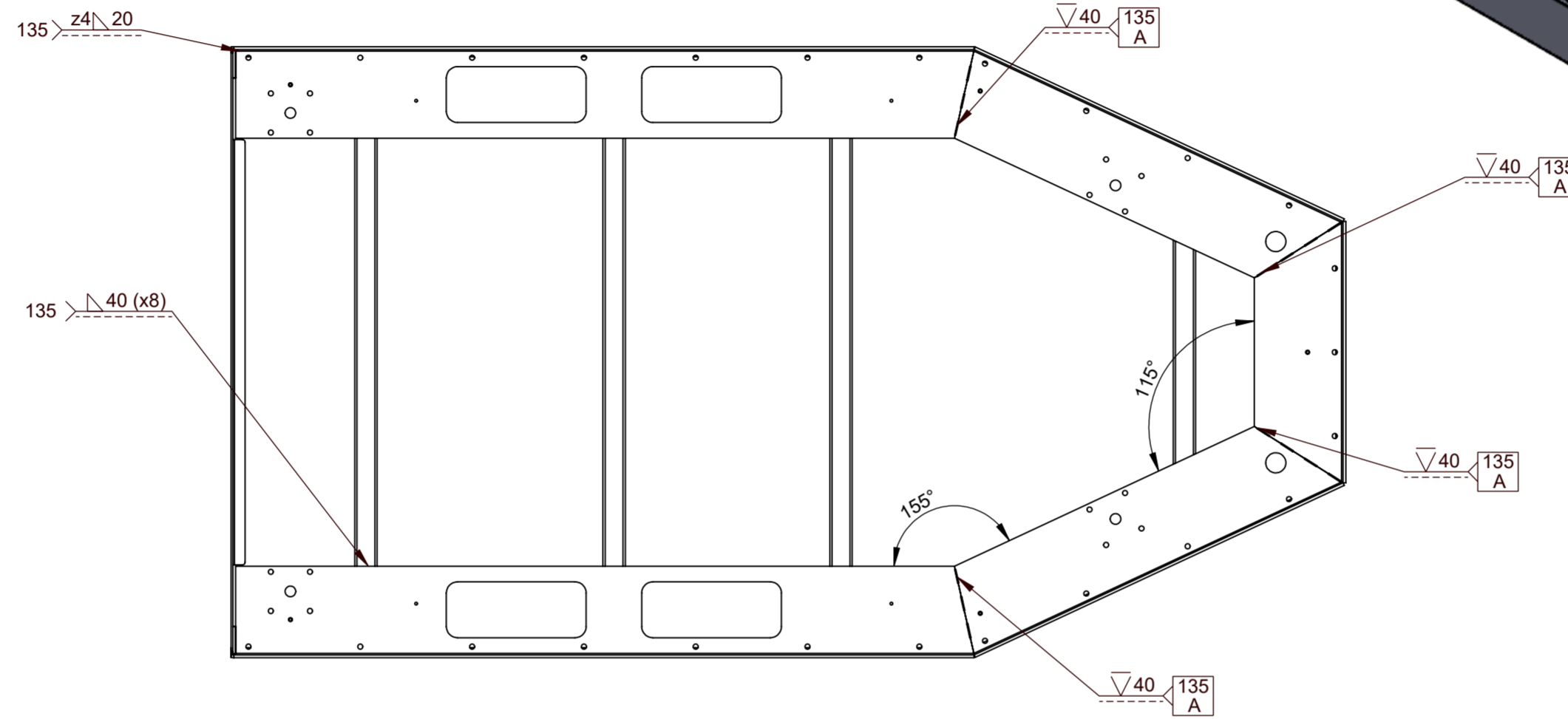
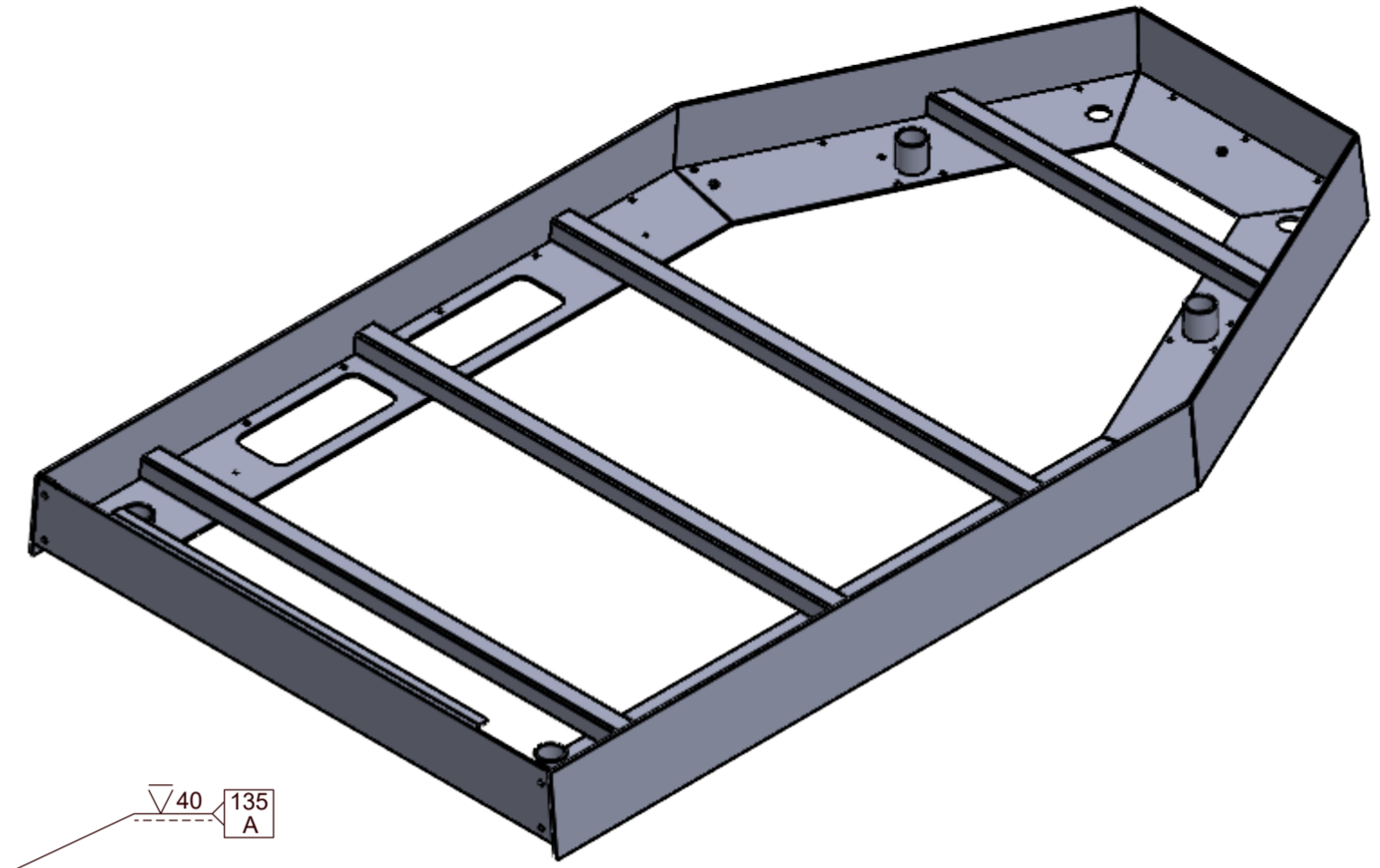
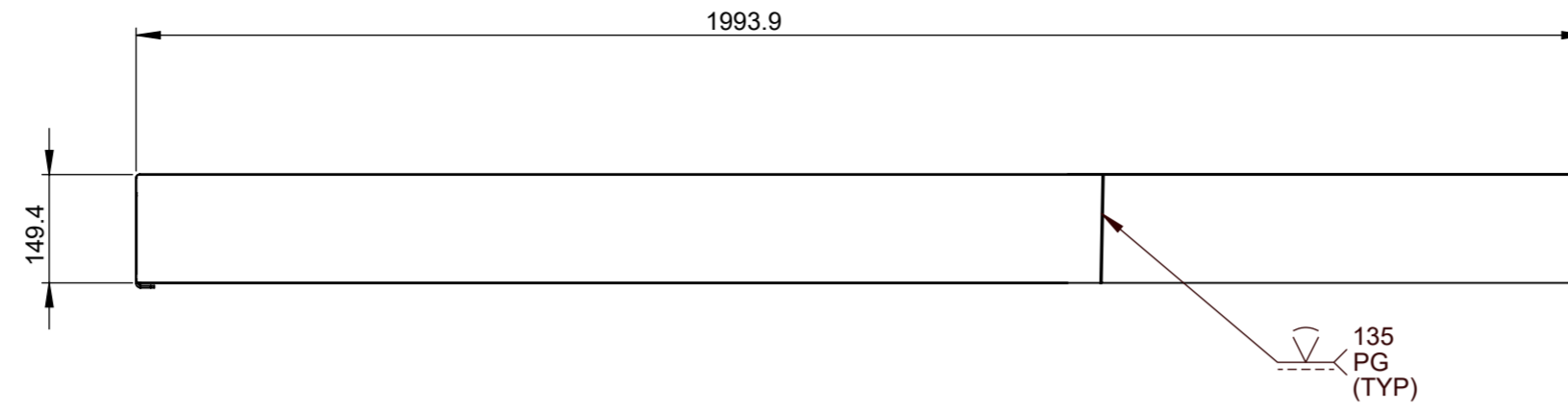
Ref A: Weld to start on inner-most edge. Grind weld Flush.

Process: General and Weld Assembly

Material: LCS SJ275

Finish: Strictly NO tooling marks throughout component.

All External Butt welds on seams to be ground to a radius for aesthetics.



SECTION A-A

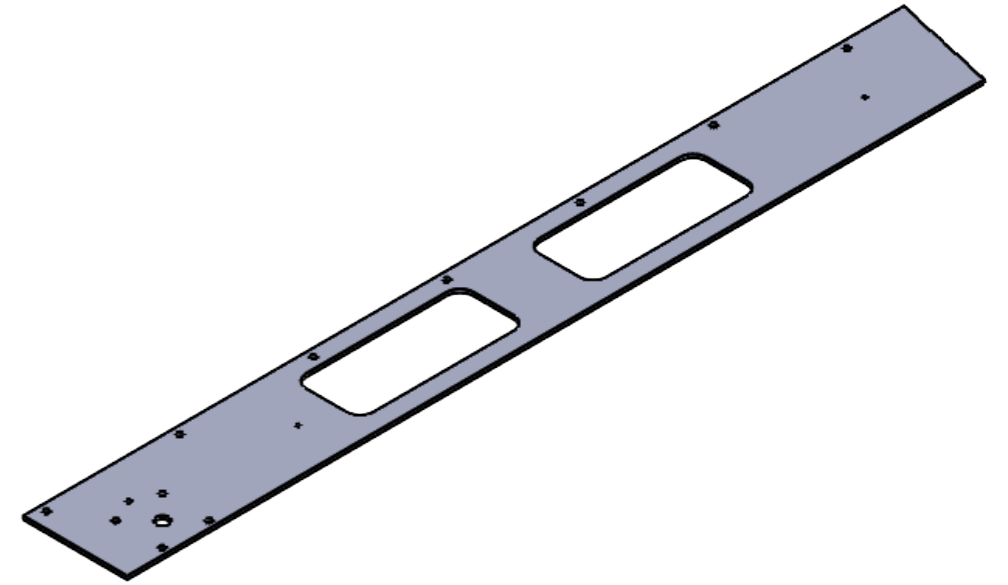
Notes:

2 Required (LH/RH)

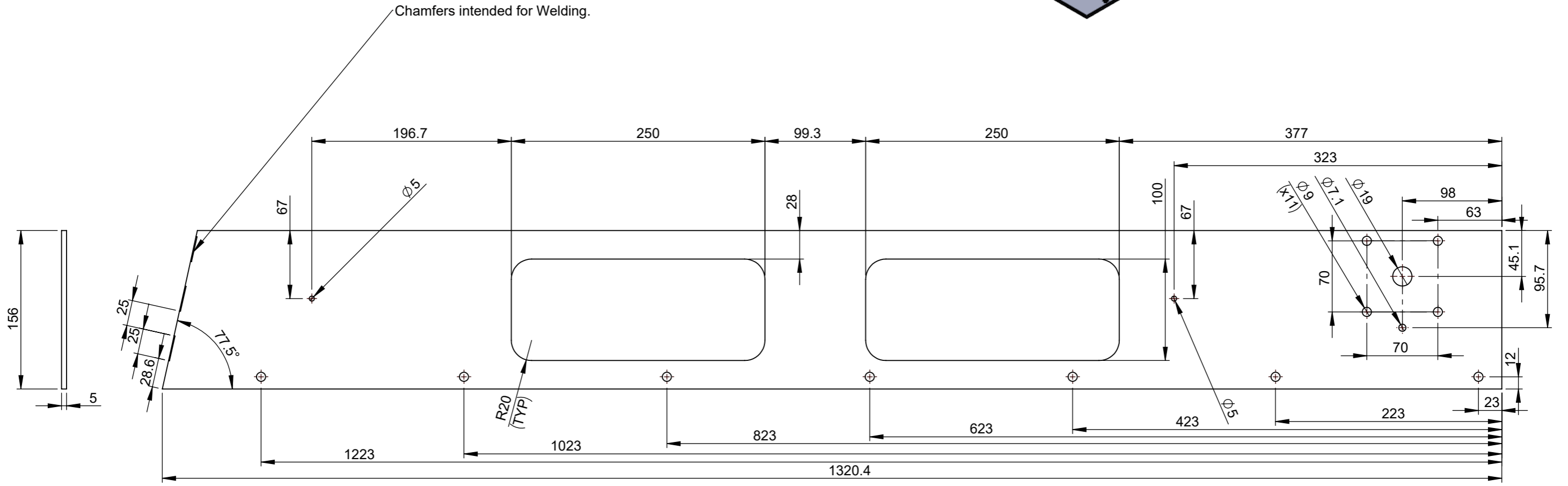
Process: Profiling

Material: 5mm THK SJ275 LCS or Similar.

Finish: Strictly NO tooling marks on component.



Chamfers intended for Welding.



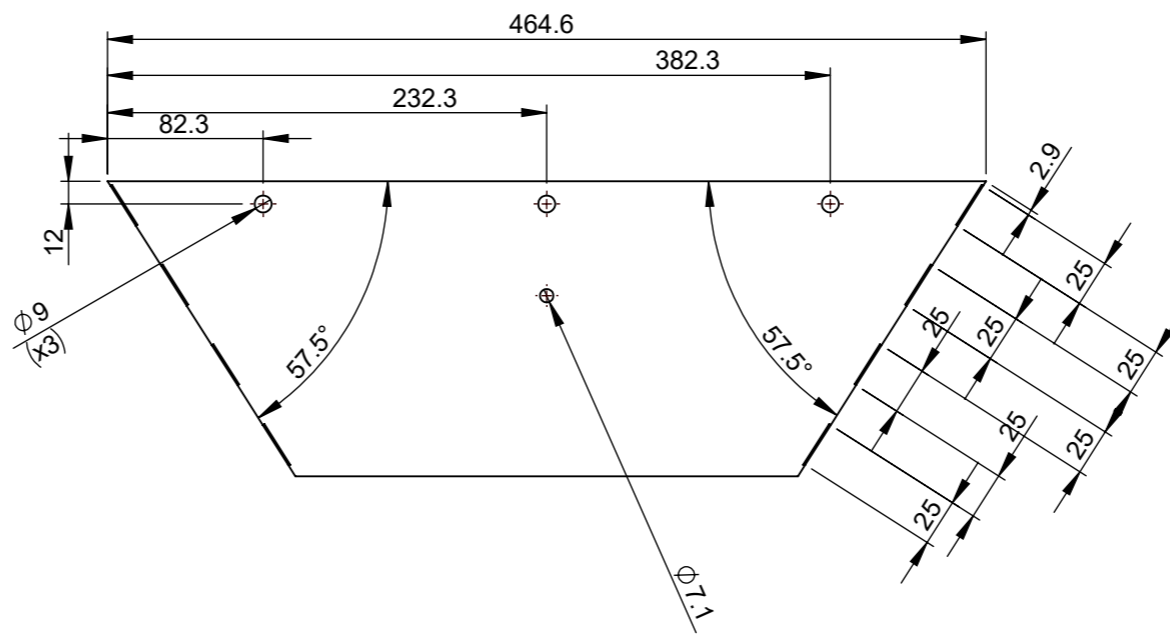
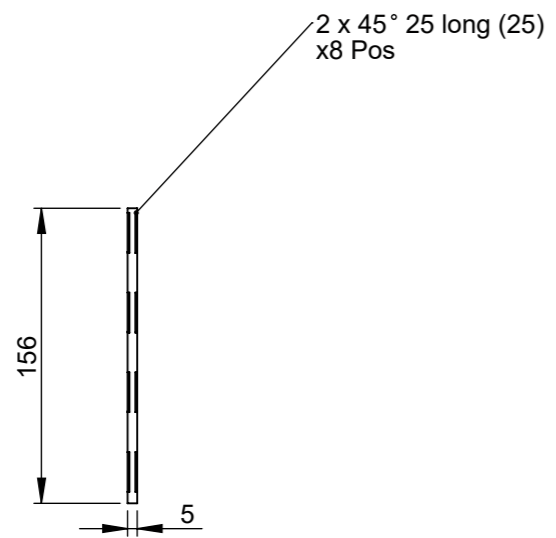
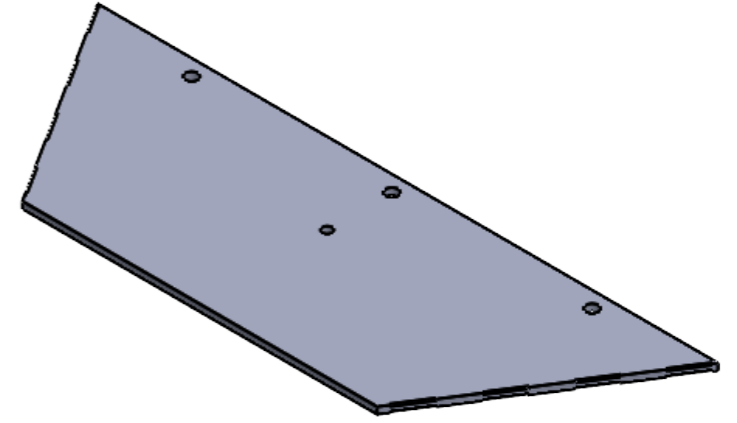


Notes:

Process: Profiling

Material: 5mm THK SJ275 LCS or Similar.

Finish: Strictly NO tooling marks on component.

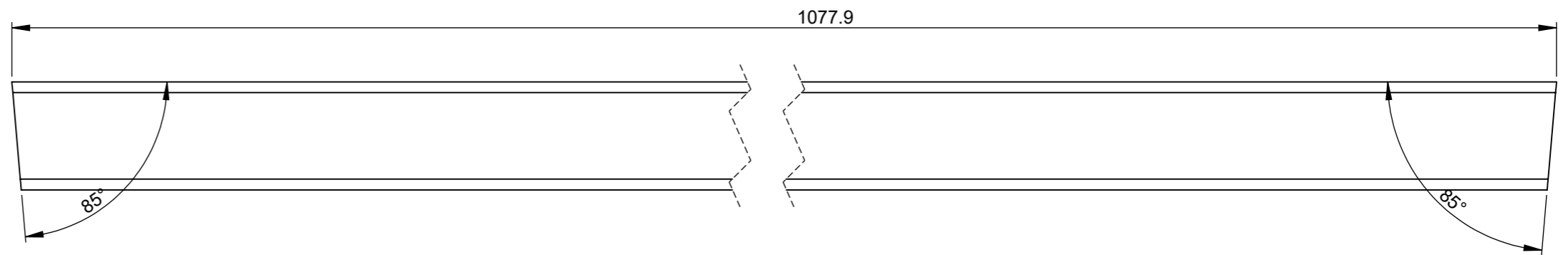
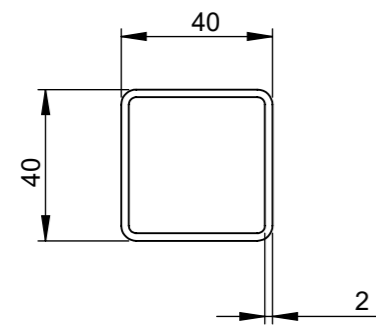


Notes:

Process: Profiling

Material: 40x40x2 SHS SJ275 LCS or Similar.

Finish: Strictly NO tooling marks on component.



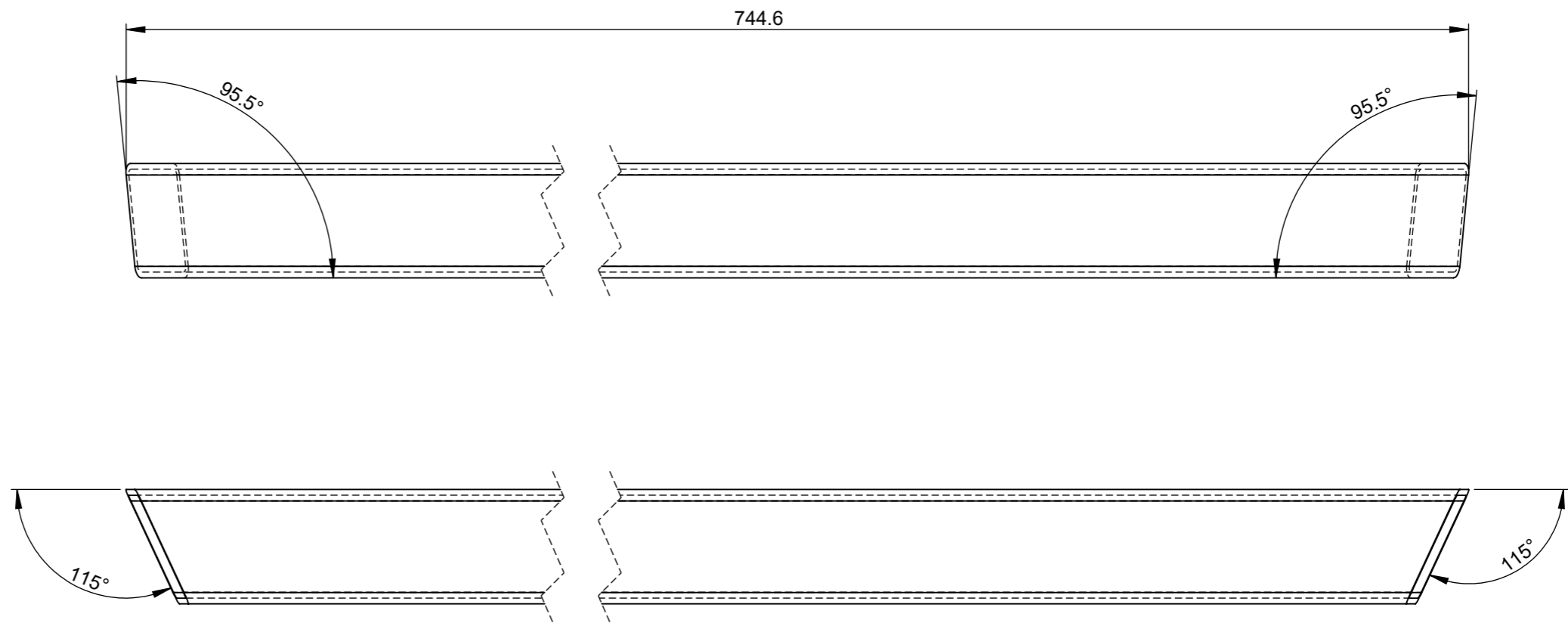
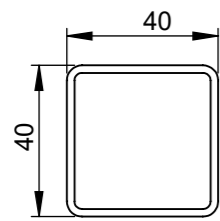
Notes:

Take care with the compound cuts on this part.

Process: Profiling

Material: 40x40x2 SHS SJ275 LCS or Similar.

Finish: Strictly NO tooling marks on component.



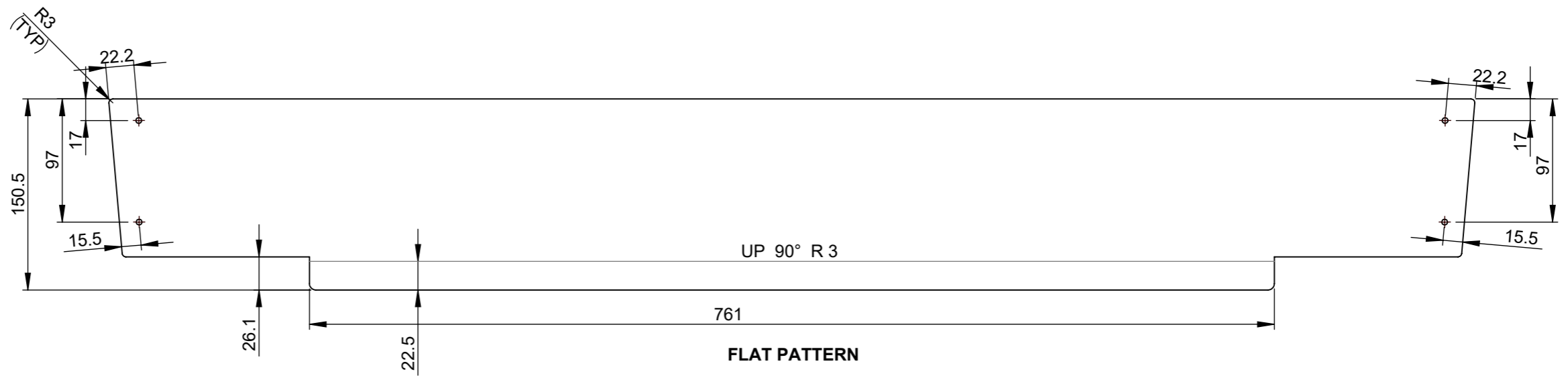
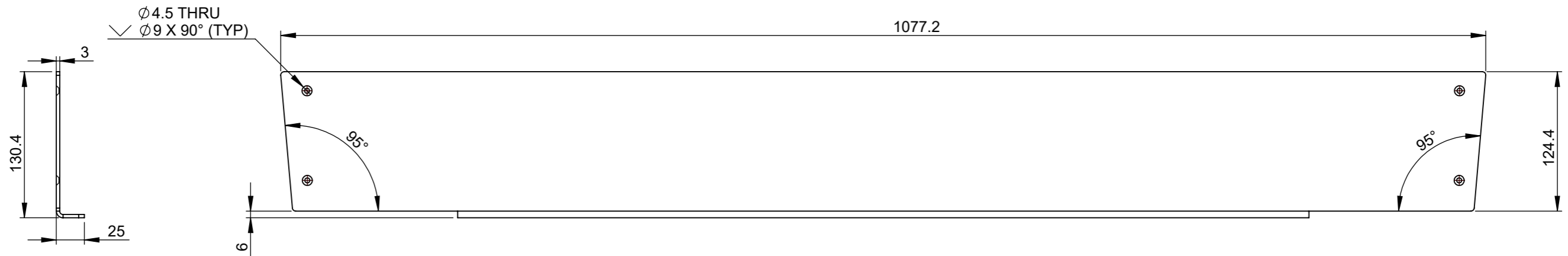
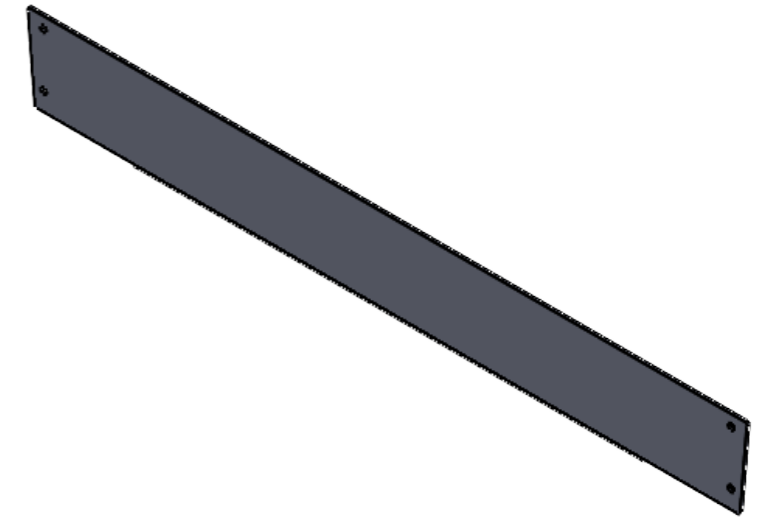
Notes:

1 Required

Process: Profiling

Material: 3mm THK SJ275 LCS or Similar.

Finish: Strictly NO tooling marks on component.





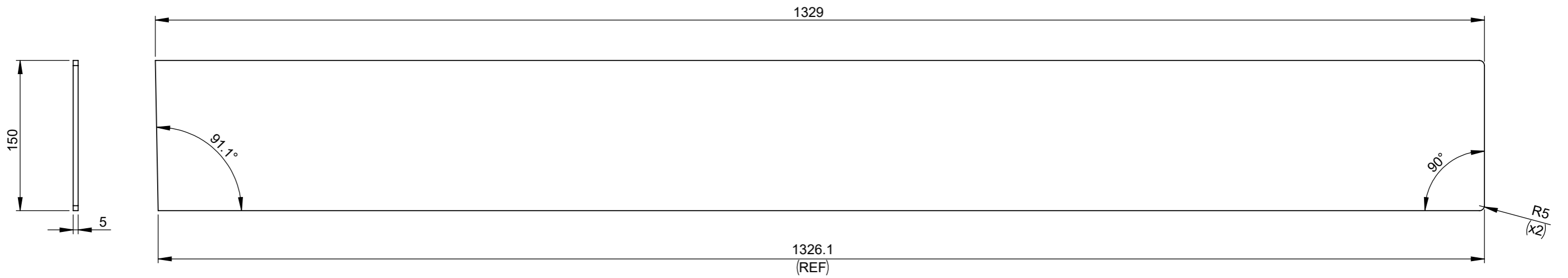
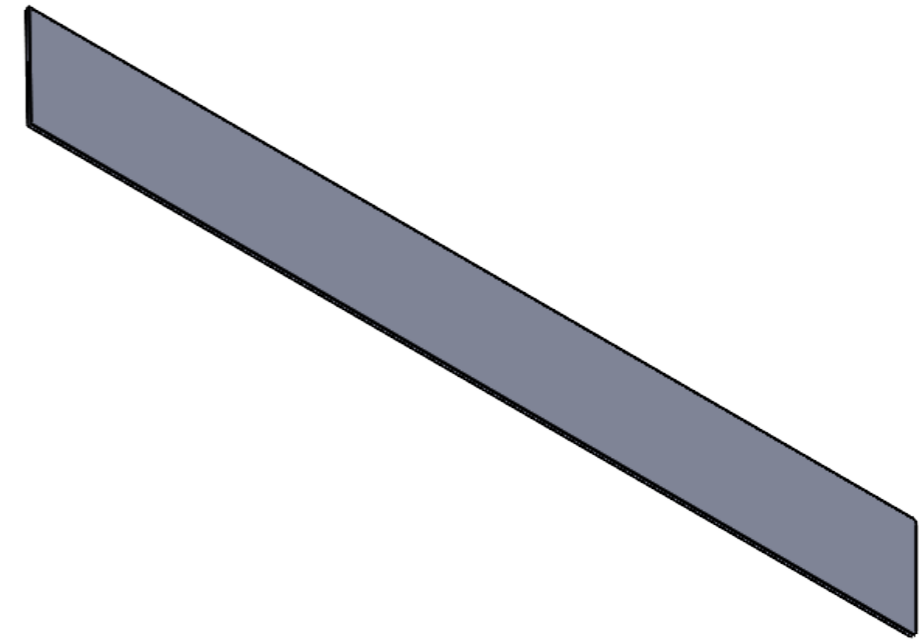
Notes:

2 Required (LH/RH)

Process: Profiling

Material: 5mm THK SJ275 LCS or Similar.

Finish: Strictly NO tooling marks on component.



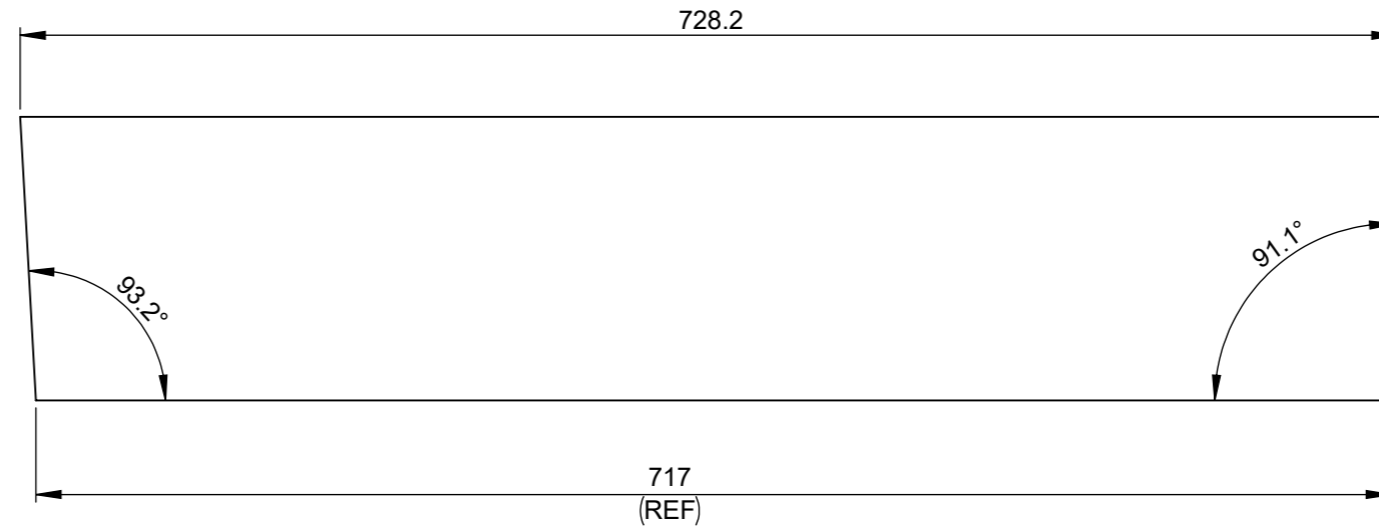
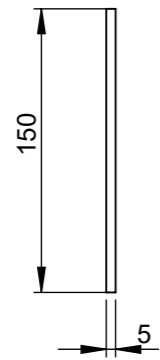
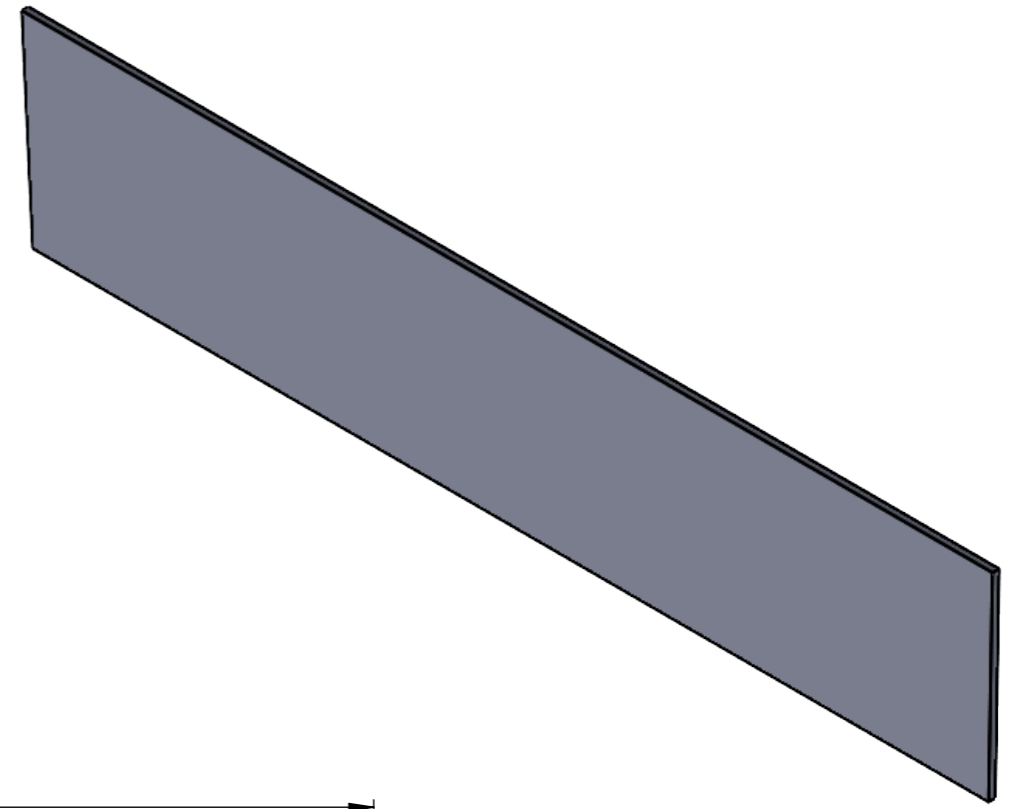
Notes:

2 Required (LH/RH)

Process: Profiling

Material: 5mm THK SJ275 LCS or Similar.

Finish: Strictly NO tooling marks on component.

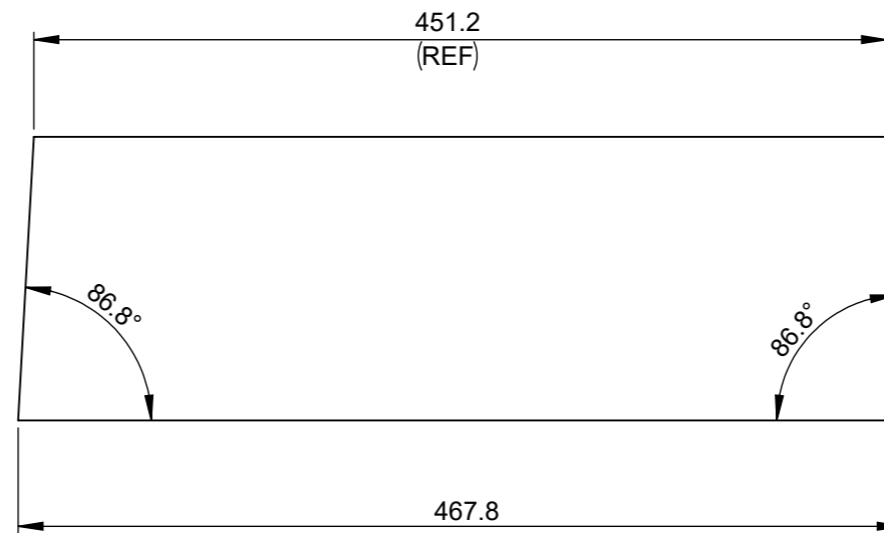
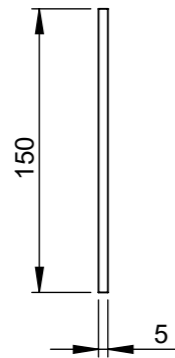
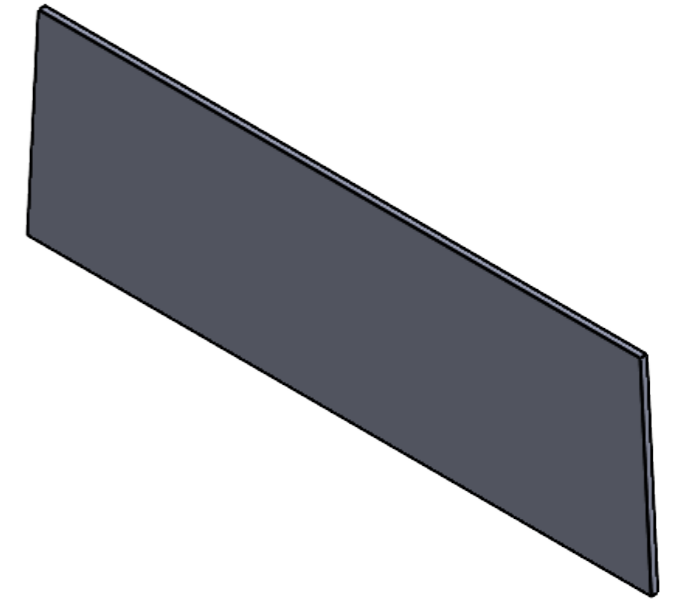


Notes:

Process: Profiling

Material: 5mm THK SJ275 LCS or Similar.

Finish: Strictly NO tooling marks on component.



Notes:

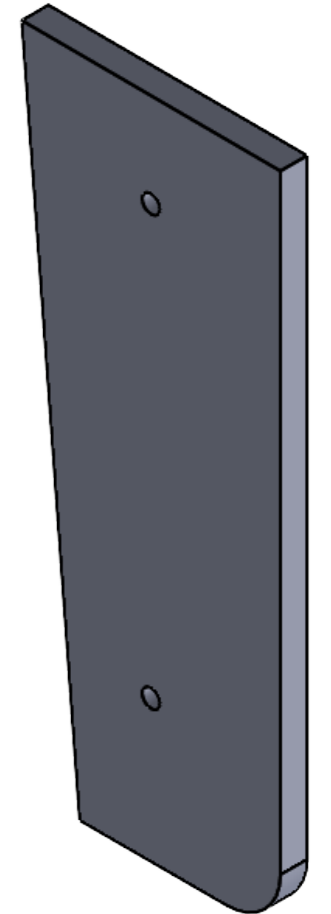
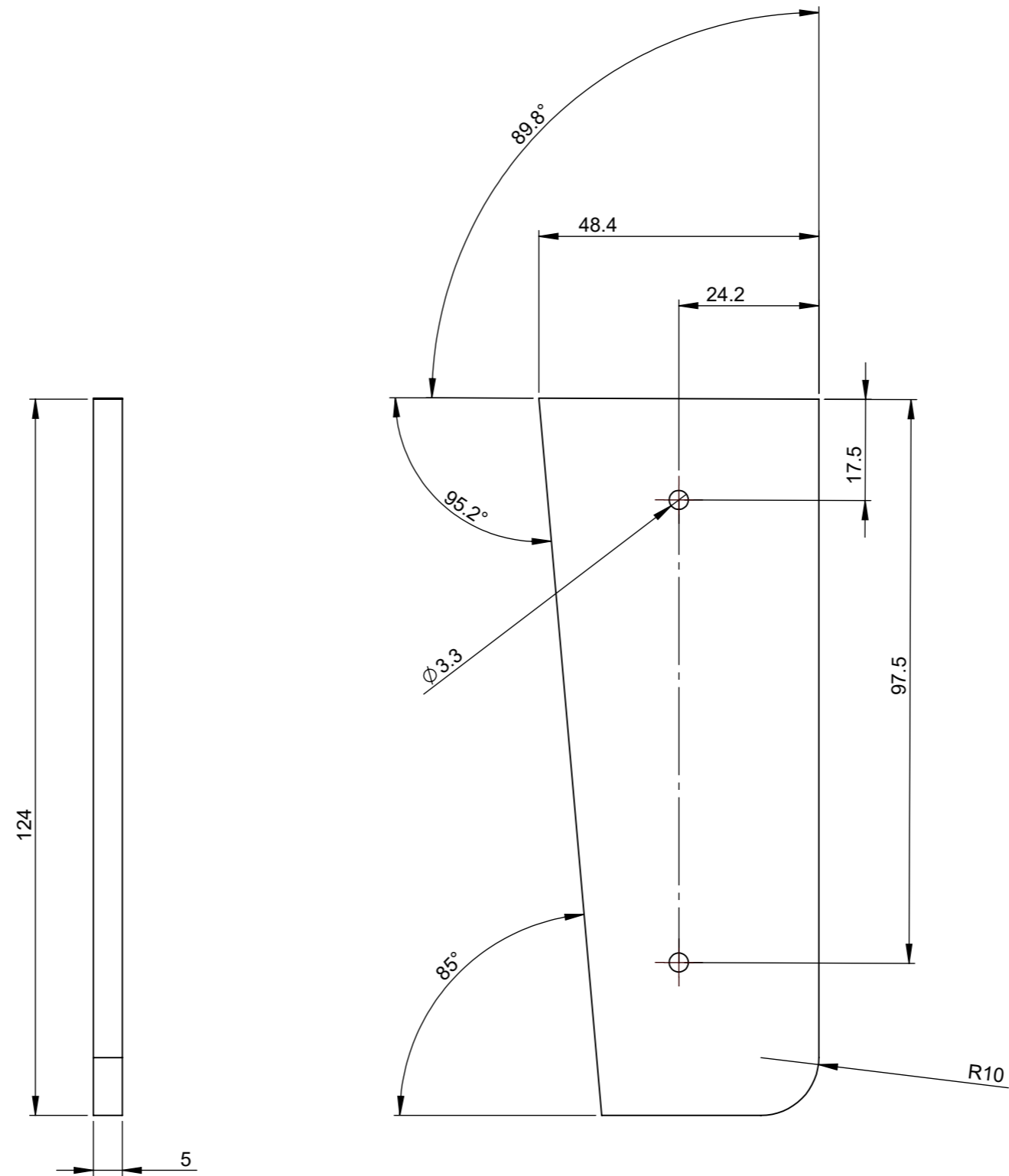
2 Required (LH/RH)

Process: Profiling

Material: 5mm THK SJ275 LCS or Similar.

Finish: Strictly NO tooling marks on component.

**OC010 - FIXING PLATE.**



Notes:

4 REQUIRED

Process: Profiling

Material: 48.3 Diameter Tube 3mm Wall - SJ275 LCS or Similar.

Finish: Strictly NO tooling marks on component.

**OC011 - WHEEL TUBE.**

